

# COMMISSIONERS' REPORT FOR RECLASSIFICATION

## DRAINAGE DISTRICT NO. 94 WRIGHT COUNTY, IOWA

NOVEMBER 2020

PROJECT NO. 19-23076

**REPORT FOR:**

Drainage District No. 94  
Wright County, Iowa

**FROM:**

Ivan D. Droessler, PE  
Senior Civil Engineer  
ISG  
1725 North Lake Avenue  
Storm Lake, Iowa, 50588  
(712) 732-7745  
ivan.droessler@ISGInc.com



COMMISSIONERS' REPORT FOR RECLASSIFICATION  
OF BENEFITS  
DRAINAGE DISTRICT NO. 94  
WRIGHT COUNTY, IOWA

TABLE OF CONTENTS

Commissioners' Report on Reclassification of Benefits.....Pages 1-3

Appendix A: DD94 – Reclassification Plat .....A

Appendix B: DD94 – Main Tile Assessment Plat & Schedule.....B

Appendix C: DD94 – Lateral 1 Tile Assessment Plat & Schedule.....C

Appendix D: DD94 – Lateral 2 Tile Assessment Plat & Schedule.....D

# Commissioners' Report

We, Bob Powers, Bob Ritter and Ivan Droessler, having previously filed oath, depose and say that we are the commissioners duly appointed to reclassify lands within the boundary of Drainage District No. 94, Wright County, Iowa (DD94).

## DRAINAGE DISTRICT NO. 94

The original petition for establishment of DD94 was filed in 1913. The facilities of the District consist of a Main Tile and two (2) Lateral Tile Lines. The construction of all facilities was paid for under one assessment schedule established in 1915. There has been no reclassification of the District until now. Section 468.131 of the Iowa Code provides that if the “original assessment schedule did not designate separately the amount each tract should pay for the main ditch and tile lateral drains then the board shall order a reclassification in accordance with the principles and rules set forth in Section 468.41.” A petition was filed requesting reclassification of DD94 at a meeting on August 12, 2019. The Trustees approved reclassification and appointed Commissioners.

Pursuant to our appointment, we have examined the Drainage District's records, as recorded by the Wright County Auditor, to establish the current exterior assessment boundary. Prior to reclassification, 95.39 acres of land was found to be draining to the facilities of DD94 but not included within the original assessment boundary. These lands were annexed to this District at public hearing on January 6, 2020. In addition, since there were not separate assessment schedules for each facility of this District, we have established the interior drainage boundaries to determine the benefitted lands for each facility listed above.

In fulfilling our appointment as commissioners, we have examined each tract of land determined to be within the watershed of each facility and have classified each of these parcels based on the following factors; benefitted acres, need of drainage, proximity to outlet, percent of facility usage, and runoff condition.

Therefore, this Commissioner's Report for the Reclassification of Benefits addresses the redistribution of benefits for the Main Tile, Lateral 1 Tile and Lateral 2 Tile of DD94. For the Main Tile, we have apportioned assessment units of 100,000 to the lands in the District according to the relative percentages of benefit they derive. For the Lateral 1 Tile and Lateral 2 Tile we have apportioned an assessment unit of 10,000 to the lands in the District according to the relative percentages of benefit they derive. These apportionments are presented in this Report as the new Assessment Schedules for DD94. These schedules are intended to provide a basis upon which to spread levies required to cover costs, present and future, incurred by the District for the maintenance, repair or improvement of the facilities the schedule is prepared for.

Although these schedules are for the lands of DD94 to pay for the maintenance and improvement of their own facilities, DD94 also outlets to the Main Open Ditch of Drainage District No. 15 (DD15), which

provides benefit to the lands of DD94; though they are not included within the assessment schedule of DD15. Therefore, by common outlet procedures under Section 468.132 of the Code of Iowa, a portion of the repair and improvement costs to the Main Open Ditch of DD15 will be allocated to DD94 for payment under the Main Tile Schedule of this reclassification.

The proportional amount of benefit the lands in DD94 receive from the DD15 Main Open Ditch was computed by Commissioners appointed by the Eagle Grove City Council, acting as Trustees of DD15. The proportional amount of benefit was derived by classifying the lands of the DD94 as if they were a single parcel outletting to the Main Open Ditch of DD15. The resulting apportionment is 13.64% for DD94 of the overall benefit provided by DD15 Main Open Ditch. The Commissioners for DD94 are the same Commissioners appointed for the reclassification of DD15 and the classification of Common Outlet benefits for the Main Open Ditch of DD15.

It will be the responsibility of the landowners of DD94 to pay for the cost of annexation and reclassification of the lands of DD94. In addition, 13.64% of cost of the 2020 Repairs to the Main Open Ditch of DD15 will also be their responsibility. A levy will be made by the Eagle Grove City Council, acting as Trustees of the District, after hearing and approval of these DD94 assessment schedules and the determined Common Outlet Percentages of Benefit.

This Commissioners' Report consists of three (3) Tile System Schedules. The individual assessment schedules are intended to list all parcels benefited by the facility for which the schedule is prepared. For each parcel in the District, the schedule provides the following:

1. The names of the owners thereof as shown on the transfer books in the Wright County Auditors' Offices;
2. The number of benefited acres;
3. The classification or percentage of benefits derived relative to a 100% benefit assigned to the tract found to have the greatest benefit;
4. An apportionment of the total schedule (Assessable Product) according to our classification of benefited lands for the facility the schedule is prepared.

The schedules also show benefits to the Iowa Department of Transportation, City of Eagle Grove and Wright County Secondary Road right-of-way.

We recommend that this Commissioners' Report containing three (3) Tile System Schedules for Drainage District No. 94 Wright County be adopted.



Respectfully submitted,

\_\_\_\_\_  
Commissioner 1, Bob Powers

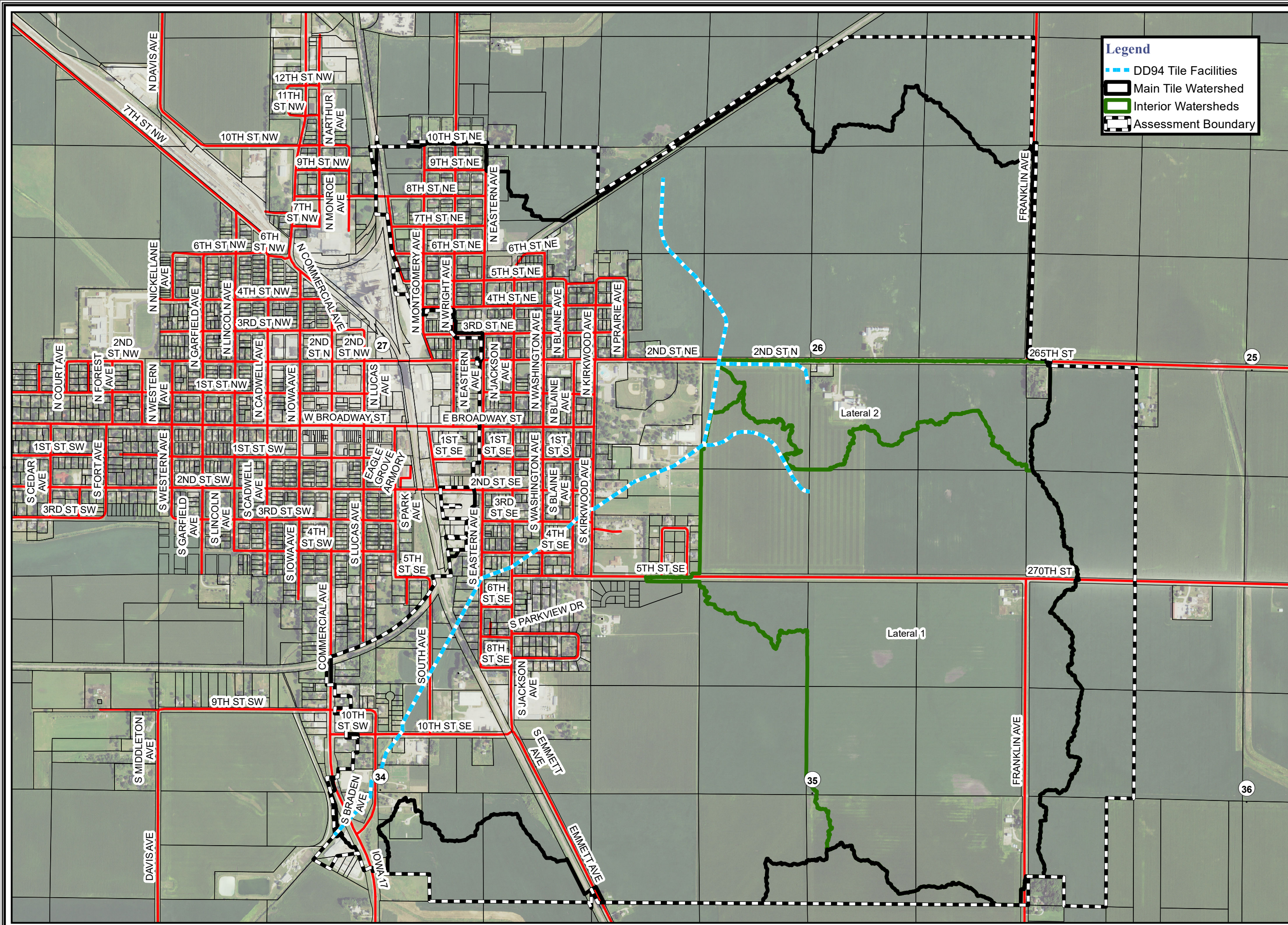
\_\_\_\_\_  
Commissioner 2, Bob Ritter

\_\_\_\_\_  
Ivan Droessler, P.E., Engineer

\_\_\_\_\_  
Date

APPENDIX A:

DD94 WRIGHT COUNTY, IOWA  
RECLASSIFICATION PLAT



**Legend**

- - - DD94 Tile Facilities
- Main Tile Watershed
- Interior Watersheds
- Assessment Boundary



# Drainage District No. 94 Reclassification Plat

Wright County,  
Iowa  
Thursday, May 28, 2020

PN: 19-23076  
Source:



0 270 540 1,080  
Feet  
1 inch = 1,067 feet

APPENDIX B:

DD94 – MAIN TILE  
ASSESSMENT PLAT & SCHEDULE



DRAINAGE DISTRICT NO. 94

WRIGHT COUNTY, IOWA

2020

MAIN TILE ASSESSMENT SCHEDULE



LANDOWNER(S)	PIN	S-T-R	BENEFITED PARCEL	ACRES	CLASS (%)	ASSESSMENT UNITS	% SCHEDULE
<b>T91N R26W, EAGLE GROVE TOWNSHIP</b>							
HARKEMA, DOUGLAS DEAN	0923300006		20' STRIP BY S SIDE OF RR & LY NW OF L1 & 5 SEC 26 & TH PT OF SW LY S & E OF RR	16.00	27.29	1234.56	1.235%
		23-91-26	23-91-26				
EAGLE-VIEW, INC.	0923400003		SW SE 23-91-26	9.00	8.82	398.95	0.399%
EAGLE-VIEW, INC.	0923400004		SE SE 23-91-26	5.00	4.91	221.99	0.222%
CHICAGO & NORTHWESTERN RAILROAD COMPANY % UNION PACIFIC RAILROA	0923501001		RR THRU SW 1/4 23-91-26	2.00	5.34	241.40	0.241%
TRAUSCH, KENNETH F., LE & TRAUSCH, DARLENE M., LE REM: HINZ, JULIE, 1/3 INT & TWEETEN, JOLENE, 1/3 INT & TRAUSCH, JEROLD, 1/3 INT	0925300001		E 8' OF N 440' OF NESE OF SEC 26 & W 282OF N 440' OF NW SW 25-91-26	2.60	2.07	93.74	0.094%
		25-91-26					
CUTALO FAMILY LIVING TRUST	0925300002		NW SW EXC W 282' OF N 440' 25-91-26	3.00	2.62	118.31	0.118%
		25-91-26					
CUTALO FAMILY LIVING TRUST	0925300005		SW SW 25-91-26	9.00	6.80	307.63	0.308%
		25-91-26		9.30	29.43	1331.05	1.331%
HARKEMA, DOUGLAS DEAN	0926102001		LOT 3 NW NW EXC W 216' OF S 38' 2.4 IN& 20' STRIP ADJ LOT 3 ON NORTH 26-91-26				
		26-91-26					
LINN, RUTH E., LE REM: LINN, ALAN DALE, INT & CHRISTENSEN, GAIL JEAN, INT & LINN, BETH KAY, INT & LINN, JEFF DEAN, INT	0926102002		LOT 4 NW NW 26-91-26	0.13	0.40	18.22	0.018%
		26-91-26					
HARKEMA, DOUGLAS DEAN	0926102003		LOTS 1, 5 & 6 NW NW 26-91-26	20.00	66.59	3012.10	3.012%
		26-91-26		40.00	78.25	3539.60	3.540%
SPANGLER LIVING TRUST, CARROLL, JR. & SPANGLER LIVING TRUST, SHIRLEY J.	0926126001		NE NW 26-91-26				
		26-91-26					
CAHALAN INVESTMENTS, LLC	0926151001		LOTS 5 & 6 BLOCK 3 LYNCH	0.28	0.62	28.22	0.028%
		26-91-26					
RETHMAN, RICHARD D. & RETHMAN, SHELLEY A., JTRS	0926151002		LOT 4 BLOCK 3 LYNCH	0.14	0.35	15.87	0.016%
		26-91-26					
SCHULTZ, REBECCA LYNNE	0926151003		LOTS 1, 2 & 3 BLOCK 3 LYNCH	0.41	1.04	46.99	0.047%
		26-91-26					
ADAMS, ALAN T.	0926151004		LOTS 7 & 8 BLOCK 3 LYNCH	0.28	0.34	15.33	0.015%
		26-91-26					
THURMOND, DENNIS A.	0926151005		LOT 9 BLOCK 3 LYNCH	0.14	0.24	11.08	0.011%
		26-91-26					
TORKELSON PROPERTIES, LLC	0926151006		LOT 10 BLOCK 3 LYNCH	0.14	0.27	12.32	0.012%
		26-91-26					
TORKELSON PROPERTIES, LLC	0926151007		LOTS 11 & 12 BLOCK 3 LYNCH	0.28	0.60	27.21	0.027%
		26-91-26					
BRECEDA-GARCIA, ALAN	0926152001		LOT 6 BLOCK 6 LYNCH	0.14	0.21	9.71	0.010%
		26-91-26					
LEWIS, DENISE A.	0926152002		LOT 5 BLOCK 6 LYNCH	0.14	0.21	9.60	0.010%
		26-91-26					
MMDUKE, LLC	0926152003		LOTS 3 & 4 BLOCK 6 LYNCH	0.28	0.43	19.23	0.019%
		26-91-26					
THURMOND, JEANETTE J.	0926152004		LOTS 1 & 2 BLOCK 6 LYNCH	0.28	0.45	20.21	0.020%
		26-91-26					
VISOCSKY, HELMUT F. & PATRICIA K.	0926152005		LOT 7 BLOCK 6 LYNCH	0.14	0.24	10.99	0.011%
		26-91-26					
SCHAFFER, JOSH & SCHAFFER, KATIE, JTRS	0926152006		LOT 8 BLOCK 6 LYNCH	0.14	0.24	10.99	0.011%
		26-91-26					
KIST, TERRY	0926152007		LOT 9 BLOCK 6 LYNCH	0.14	0.24	10.99	0.011%
		26-91-26					
OLMSTEAD, DELORES	0926152008		LOTS 10-11-12 BLOCK 6 LYNCH	0.42	0.59	26.80	0.027%
		26-91-26					
POHLMAN, ALAN S. & POHLMAN, TERI JO, JTRS	0926153003		LOT 4 BLOCK 7 LYNCH	0.15	0.26	11.69	0.012%
		26-91-26					
POHLMAN, ALAN S. & POHLMAN, TERI JO, JTRS	0926153004		LOT 3 & W 1/2 OF LOT2 BLOCK 7 LYNCH	0.22	0.38	17.15	0.017%
		26-91-26					
POOL, NAOMI	0926153005		LOT 1 & E 1/2 OF LOT2 BLOCK 7 LYNCH	0.22	0.38	17.18	0.017%
		26-91-26					
WILDE, CHAD & ANN, JTRS	0926153006		LOTS 7, 8 & 9 BLOCK7 LYNCH	0.35	0.61	27.56	0.028%
		26-91-26					
POOL, NETHA	0926153007		LOT 10 BLOCK 7 LYNCH	0.12	0.20	9.23	0.009%
		26-91-26					
POOL, NETHA	0926153008		LOTS 11 & 12 BLOCK 7 LYNCH	0.24	0.41	18.47	0.018%
		26-91-26					
JENSEN, ALAN W.	0926153009		LOT 5 & 6 BLOCK 7 LYNCH	0.30	0.52	23.53	0.024%
		26-91-26					
LINN, RUTH E., LE REM: LINN, ALAN DALE, INT & CHRISTENSEN, GAIL JEAN, INT & LINN, BETH KAY, INT & LINN, JEFF DEAN, INT	0926154001		LOT 4 SW NW 26-91-26	0.37	0.95	43.05	0.043%
		26-91-26					
LINN, RUTH E., LE REM: LINN, ALAN DALE, INT & CHRISTENSEN, GAIL JEAN, INT & LINN, BETH KAY, INT & LINN, JEFF DEAN, INT	0926154002		LOT 5 SW NW 26-91-26	0.50	1.02	46.30	0.046%
		26-91-26					
LINN, RUTH, LE REM: LINN, ALAN DALE, 1/4 INT & CHRISTENSEN, GAIL JEAN, 1/4 INT & LINN, BETH KEY, 1/4 INT & LINN, JEFF DEAN, 1/4 INT	0926154003		W 216' OF S 38'2.4INL3 NW NW L6 SW NW & L3 SW NW EXC E 16 1/2' OF S 22 26-91-26	1.53	4.43	200.36	0.200%
		26-91-26					

DRAINAGE DISTRICT NO. 94  
 WRIGHT COUNTY, IOWA  
 2020



MAIN TILE ASSESSMENT SCHEDULE

LANDOWNER(S)	PIN	S-T-R	BENEFITED PARCEL	ACRES	CLASS (%)	ASSESSMENT UNITS	% SCHEDULE
<b>T91N R26W, EAGLE GROVE TOWNSHIP</b>							
HARKEMA, DOUGLAS DEAN	0926154004	26-91-26	LOT 2 SW NW & E 16 1/2' OF S 220' LOT 3SW NW 26-91-26	0.36	1.09	49.52	0.050%
HERNANDEZ, DAVID	0926154005	26-91-26	N 264' OF LOT 7 SW NW 26-91-26	1.00	3.22	145.69	0.146%
BEEBE RENTALS LLC	0926154007	26-91-26	LOT 8 SW NW EXC N 6' 26-91-26	0.21	0.48	21.86	0.022%
BEEBE RENTALS LLC	0926154008	26-91-26	LOT 9 SW NW 26-91-26	1.00	2.33	105.44	0.105%
MOHR, KENNETH EUGENE & JERGENSON, DANIELLE N.	0926154012	26-91-26	N 120' OF S 264' OF LOT 7 SW NW 26-91-26 LOT 7 EXC N 384' & N 6' OF LOT 8 SW NW 26-91-26	0.57	1.33	60.31	0.060%
SCHNELL, MELVIN E. & CARLA, JTRS	0926154013	26-91-26	LOT 1 SW NW EXC PAR I 26-91-26	20.97	56.06	2535.61	2.536%
HARKEMA, DOUGLAS DEAN	0926154014	26-91-26	W 200' OF PAR 1 SW NW	0.88	1.51	68.14	0.068%
PICKERING, CHAD M. & OLSON, REBEKAH O., JTRS	0926154016	26-91-26	PAR I SW NW EXC W 200'	0.88	1.66	75.17	0.075%
PICKERING, CHAD M. & OLSON, REBEKAH O., JTRS	0926154017	26-91-26	SE NW 26-91-26	39.00	100.00	4523.22	4.523%
SPANGLER LIVING TRUST, CARROLL, JR. & SPANGLER LIVING TRUST, SHIRLEY J.	0926176001	26-91-26	NW NE 26-91-26	40.00	55.03	2489.28	2.489%
EAGLE-VIEW, INC.	0926200001	26-91-26	NE NE 26-91-26	37.00	40.68	1840.16	1.840%
EAGLE-VIEW, INC.	0926200002	26-91-26	SW NE 26-91-26	39.00	50.18	2269.54	2.270%
EAGLE-VIEW, INC.	0926200003	26-91-26	SE NE 26-91-26	37.50	59.62	2696.81	2.697%
EAGLE-VIEW, INC.	0926200004	26-91-26	N 120' OF W 150' OF LOT 2 NW SW 26-91-26	0.41	0.85	38.26	0.038%
COUNTRYSIDE RENTALS, INC.	0926301002	26-91-26	W 197' OF S 177' EXCE 47' OF N 69.6' OF LOT 2 NW SW 26-91-26	0.73	1.52	68.94	0.069%
THOMPSON, PAUL W.	0926301003	26-91-26	PARCEL A IN NW SW 26-91-26	0.20	0.42	18.89	0.019%
COUNTRYSIDE RENTALS, INC.	0926301004	26-91-26	W26RDS OF LOT2EX N 33'&EX W150'&EX E 47OF S107.9'OF W 197' &EXC TR A NW SW 26-91-26	1.41	3.01	136.30	0.136%
WRIGHT COUNTY DISTRICT JUNIOR FAIR	0926301005	26-91-26	PAR J OUTLOT 1 NW SW 26-91-26	4.48	9.91	448.05	0.448%
WRIGHT COUNTY JUNIOR DISTRICT FAIR	0926301008	26-91-26	E 52 RDS OF S 1/ RDS& N 2 RDS OF E277.65OF W 26 RDS OF LOT 2 EXC PAR J NW SW 26-91-26	5.73	14.85	671.68	0.672%
WRIGHT COUNTY DISTRICT JUNIOR FAIR	0926301009	26-91-26	LOT 1 NW SW EXC PAR J & EXC PAR K (SWIMMING POOL) 26-91-26	17.07	37.30	1687.13	1.687%
CITY OF EAGLE GROVE	0926301010	26-91-26	PAR K IN LOT 1 NW SW 26-91-26	8.59	15.29	691.72	0.692%
EAGLE GROVE COMMUNITY SCHOOL DISTRICT	0926301011	26-91-26	NE SW 26-91-26	39.00	90.54	4095.52	4.096%
SPANGLER LIVING TRUST, RONALD E.	0926326001	26-91-26	N 138' OF W 290' OF LOT 1 SW SW 26-91-26	0.92	2.02	91.36	0.091%
WILLARD, BETTY JO	0926351001	26-91-26	S 192.92' OF W 396' OF OL 1 & N 27.08' OF OL 2 SW SW 26-91-26	2.00	6.04	273.40	0.273%
EAGLE GROVE IA HOUSING ASSOCIATES	0926351002	26-91-26	LOT 1 EXC N 138' OF W 290' OF SW SW EXC S 192.92' OF W 396' 26-91-26	7.19	18.40	832.11	0.832%
WRIGHT COUNTY DISTRICT JUNIOR FAIR	0926351003	26-91-26	LOT 2 EXC S 406.25' SW SW & EXC N 27.08'OF W 396' 26-91-26	14.08	28.64	1295.37	1.295%
WRIGHT COUNTY DISTRICT JUNIOR FAIR	0926351004	26-91-26	S 406.25' OF W 671' LOT 2 SW SW 26-91-26	6.26	12.43	562.11	0.562%
ROTARY CLUB OF EAGLE GROVE HOME, INC.	0926351005	26-91-26	LOT 3 SW SW EXC E 621' 26-91-26	4.08	7.00	316.48	0.316%
ROTARY CLUB OF EAGLE GROVE HOME, INC.	0926351007	26-91-26	LOT 1 MAIER ADD	0.41	0.94	42.46	0.042%
WH PROPERTIES, LLC	0926351008	26-91-26	LOT 2 MAIER ADD	0.41	1.14	51.58	0.052%
PARROTT, AARON M. & PARROTT, JANEL, JTRS	0926351009	26-91-26	LOT 3 MAIER ADD	0.41	1.17	53.06	0.053%
MAIER, JEROME P. & SUSAN J., JTRS	0926351010	26-91-26	LOT 4 MAIER ADD	0.41	0.98	44.27	0.044%
MAIER, JEROME P. & SUSAN J., JTRS	0926351011	26-91-26	LOT 5 MAIER ADD	0.45	1.07	48.40	0.048%
RYERSON AUCTION & REALTY LTD.	0926351012	26-91-26					

DRAINAGE DISTRICT NO. 94

WRIGHT COUNTY, IOWA

2020

MAIN TILE ASSESSMENT SCHEDULE



LANDOWNER(S)	PIN	S-T-R	BENEFITED PARCEL	ACRES	CLASS (%)	ASSESSMENT UNITS	% SCHEDULE
<b>T91N R26W, EAGLE GROVE TOWNSHIP</b>							
CRAIL, TRACY A. & TRACY M., JTRS	0926351013	26-91-26	LOT 6 MAIER ADD	0.45	1.32	59.49	0.059%
SADLER CONSTRUCTION, INC.	0926351014	26-91-26	LOT 7 MAIER ADD	0.45	0.73	32.97	0.033%
LIVENGOOD, CHRISTOPHER W. & BRENDA K., JTRS	0926351015	26-91-26	LOT 8 MAIER ADD	0.45	0.85	38.54	0.039%
WILLARD, ANTHONY A. & WILLARD, AMY MARIE, JTRS	0926351018	26-91-26	LOT 11 MAIER ADD	0.41	1.14	51.68	0.052%
WH PROPERTIES, LLC	0926351019	26-91-26	LOT 12 MAIER ADD	0.41	0.93	41.99	0.042%
LIVENGOOD, CHRISTOPHER W. & BRENDA K., JTRS	0926351021	26-91-26	N 1/2 OF LOT 9 MAIER ADD	0.20	0.30	13.66	0.014%
SMITH, DUSTIN R. & DEBBIE L., JTRS	0926351023	26-91-26	S 1/2 OF LOT 9 AND ALL OF LOT 10 MAIER ADD	0.61	1.58	71.55	0.072%
WH PROPERTIES, LLC	0926352001	26-91-26	LOT 17 MAIER ADD	0.36	0.83	37.38	0.037%
JONES, MARK E. & JONES, BARBARA J., JTRS	0926352002	26-91-26	LOT 18 MAIER ADD	0.36	0.82	37.02	0.037%
SCHILD, JOSHUA J. & SCHILD, JENNIFER V., JTRS	0926352003	26-91-26	LOT 19 MAIER ADD	0.36	1.01	45.50	0.046%
YEPEZ, HORTENSIA	0926352004	26-91-26	LOT 20 MAIER ADD	0.36	0.82	37.04	0.037%
WH PROPERTIES, LLC	0926352005	26-91-26	LOT 16 MAIER ADD	0.36	0.78	35.43	0.035%
WH PROPERTIES, LLC	0926352006	26-91-26	LOT 15 MAIER ADD	0.36	0.82	37.05	0.037%
WH PROPERTIES, LLC	0926352007	26-91-26	LOT 14 MAIER ADD	0.36	0.82	37.09	0.037%
WH PROPERTIES, LLC	0926352008	26-91-26	LOT 13 MAIER ADD	0.36	0.82	37.09	0.037%
SPANGLER LIVING TRUST, RONALD E.	0926376001	26-91-26	SE SW 26-91-26	38.50	72.07	3259.83	3.260%
NORTHERN NATURAL GAS COMPANY	0926400001	26-92-26	W 75' OF N 93' NW SE 26-91-26	0.16	0.49	21.96	0.022%
SPANGLER, MELVIN D.	0926400003	26-91-26	NE SE EXC E 8' OF N 440' 26-91-26	39.00	39.83	1801.60	1.802%
SPANGLER LIVING TRUST, RONALD E.	0926400004	26-91-26	SW SE 26-91-26	39.00	75.06	3395.25	3.395%
SPANGLER, MELVIN D.	0926400005	26-91-26	SE SE 26-91-26	38.50	54.49	2464.56	2.465%
SPANGLER LIVING TRUST, RONALD E.	0926400006	26-91-26	NW SE EXC N 190' OF W 275' 26-91-26	38.21	46.61	2108.48	2.108%
SPANGLER, FRED A. & SPANGLER, SHIRLEY A., JTRS	0926400007	26-91-26	W 275' OF N 190' OF NW SE EXC N 93' OF W 75' 26-91-26	0.79	1.76	79.41	0.079%
CHICAGO & NORTHWESTERN RAILROAD COMPANY % UNION PACIFIC RAILROA	0926501001	26-91-26	BAL RR THRU NW 1/4 26-91-26	1.00	4.44	201.03	0.201%
VAN JAARVELD, ALWYN & VAN JAARVELD, JENNIFER A., JTRS	0927201001	27-91-26	BLOCK 9 EXC S 100' OF E 116' & BLOCK 10WR-3	4.58	4.27	193.27	0.193%
JDM MANAGEMENT, LLC	0927202001	27-91-26	LOT 10 BLOCK 11 WRI 3	0.16	0.17	7.74	0.008%
JDM MANAGEMENT, LLC	0927202002	27-91-26	LOT 9 BLOCK 11 WRI 3	0.16	0.14	6.29	0.006%
LORENZO, ANTONIO	0927202003	27-91-26	LOT 8 BLOCK 11 WRI 3	0.16	0.17	7.74	0.008%
BUHR, SHERYL L.	0927202004	27-91-26	LOT 7 BLOCK 11 WRI 3	0.16	0.14	6.29	0.006%
BUHR, SHERYL L.	0927202005	27-91-26	LOT 6 BLOCK 11 WRI 3	0.16	0.17	7.84	0.008%
SHIVERS, TREASA	0927202006	27-91-26	LOT 1 BLOCK 11 WRI 3	0.16	0.17	7.74	0.008%
SHIVERS, TREASA	0927202007	27-91-26	LOTS 2 & 3 BLOCK 11WRI 3RD	0.32	0.34	15.48	0.015%
MARROQUIN MONTUFAR, CANDIDO & MARROQUIN ARGUETA, GERVER NOEL, JTRS	0927202008	27-91-26	LOT 4 BLOCK 11 WRI 3	0.16	0.17	7.87	0.008%
ATCHISON, DALE B.	0927202009	27-91-26	W 1/2 OF LOT 5 BLOCK 11 WRI 3RD	0.08	0.09	3.96	0.004%
BURNS, MELISSA	0927202010	27-91-26	E 1/2 OF LOT 5 BLOCK 11 WRI 3RD	0.08	0.09	3.96	0.004%
ZANDER, KAREN JEAN	0927203001	27-91-26	LOT 10 BLOCK 12 WRI 3	0.16	0.17	7.74	0.008%
KRAUSE, DAVID L. & CONNIE LEE, JTRS	0927203002	27-91-26	LOT 9 BLOCK 12 WRI 3	0.16	0.17	7.82	0.008%
KRAUSE, DAVID L. & KRAUSE, CONNIE LEE, JTRS	0927203003	27-91-26	LOT 8 & N 1/2 OF LOT7 BLOCK 12 WRI 3RD	0.24	0.26	11.88	0.012%
JDM MANAGEMENT, L.L.C.	0927203004	27-91-26	LOT 6 & S 1/2 OF LOT7 BLOCK 12 WRI 3RD	0.24	0.26	11.88	0.012%
JESSEN, DIANE E.	0927203005	27-91-26	LOTS 1 & 2 BLOCK 12 WRI 3RD	0.32	0.34	15.54	0.016%
JESSEN, DIANE E.	0927203006	27-91-26	LOT 3 BLOCK 12 WRI 3	0.16	0.18	7.92	0.008%
JESSEN, DIANE E.	0927203007	27-91-26	LOTS 4 & 5 BLOCK 12 WRI 3RD	0.32	0.36	16.48	0.016%
BANWELL, LEIGH F. & SHERRY J., JTRS	0927204001	27-91-26	S 100' OF E 116' OF BLK 9 WRI 3RD	0.27	0.31	13.81	0.014%

# DRAINAGE DISTRICT NO. 94

WRIGHT COUNTY, IOWA

2020

## MAIN TILE ASSESSMENT SCHEDULE



LANDOWNER(S)	PIN	S-T-R	BENEFITED PARCEL	ACRES	CLASS (%)	ASSESSMENT UNITS	% SCHEDULE
<b>T91N R26W, EAGLE GROVE TOWNSHIP</b>							
WH PROPERTIES, LLC	0927205001	27-91-26	LOTS 9 & 10 BLOCK 8WRI 3RD	0.32	0.29	12.98	0.013%
TIMMERMAN, BEVERLY J. & THEODORE E.	0927205002	27-91-26	LOTS 6, 7 & 8 BLOCK8 WRI 3RD	0.48	0.44	19.72	0.020%
ATCHISON, LUCINDA	0927205003	27-91-26	LOT 1 BLOCK 8 WRI 3	0.16	0.18	7.93	0.008%
SEABA, SUELLEN	0927205004	27-91-26	LOTS 2 & 3 BLOCK 8 WRI 3RD	0.32	0.35	15.87	0.016%
HANUS, DONALD R.	0927205005	27-91-26	LOT 4 BLOCK 8 WRI 3	0.16	0.18	7.94	0.008%
WEPEL, ROBERT L. & NANCY M., JTRS	0927205006	27-91-26	LOT 5 BLOCK 8 WRI 3	0.16	0.18	7.98	0.008%
VRBA, BREEANN	0927206001	27-91-26	LOTS 9 & 10 BLOCK 7 WRI 3RD	0.32	0.35	15.97	0.016%
BUHR, DALLAS & SHERYL, JTRS	0927206004	27-91-26	LOT 6 BLOCK 7 WRI 3	0.16	0.18	7.99	0.008%
SECURITY SAVINGS BANK	0927206007	27-91-26	LOTS 3-4-5 BLOCK 7 WRI 3RD	0.48	0.74	33.32	0.033%
DANIELS, ALLEN DALE	0927206008	27-91-26	LOTS 1 & 2 BLOCK 7 WRI 3	0.32	0.38	17.41	0.017%
KAISER PROPERTIES I, LLC	0927206009	27-91-26	LOTS 7 & 8 BLOCK 7 WRI 3	0.32	0.35	15.97	0.016%
EAGLE GROVE COMMUNITY DEVELOPMENT CORPORATION	0927207001	27-91-26	LOTS 7-8-9-10-11-12 BLOCK 4 WRI 3RD	1.28	1.27	57.41	0.057%
EAGLE GROVE COMMUNITY DEVELOPMENT CORPORATION	0927207002	27-91-26	LOTS 1, 2 & 3 BLOCK4 WRI 3RD	0.48	0.44	19.92	0.020%
CAHALAN INVESTMENTS, LLC	0927207003	27-91-26	LOT 4 BLOCK 4 WRI 3	0.16	0.18	8.22	0.008%
CAHALAN INVESTMENTS, LLC	0927207004	27-91-26	LOT 5 BLOCK 4 WRI 3	0.16	0.15	6.67	0.007%
CLAVEY, JANELLE E. & RAYMOND A., JTRS.	0927207005	27-91-26	LOT 6 BLOCK 4 WRI 3	0.16	0.18	8.24	0.008%
PRESSLER, RODNEY D.	0927208001	27-91-26	LOTS 11 & 12 BLOCK 5 WRI 3RD	0.32	0.37	16.57	0.017%
TERRY, CRAIG	0927208004	27-91-26	LOT 8 BLOCK 5 WRI 3	0.16	0.19	8.46	0.008%
TERRY, CRAIG	0927208005	27-91-26	LOT 7 BLOCK 5 WRI 3	0.16	0.19	8.50	0.009%
SLAGLE, DEBRA K.	0927208006	27-91-26	LOT 1 BLOCK 5 WRI 3	0.16	0.18	8.03	0.008%
FEDKENHEUER, LISA J., 1/2 INT & TERRY, HANNAH LYNNE & TERRY, DANE	0927208007	27-91-26	LOT 2 BLOCK 5 WRI 3	0.16	0.18	8.15	0.008%
HUNTER, 1/2 INT	0927208008	27-91-26	LOT 3 BLOCK 5 WRI 3	0.16	0.19	8.41	0.008%
SMITH, DEBORA L.	0927208009	27-91-26	N 1/2 OF LOT 5 & LOT4 BLOCK 5 WRI 3RD	0.24	0.28	12.68	0.013%
STELL, CARL J. & KIMBERLY K., JTRS	0927208010	27-91-26	LOT 6 & S 1/2 OF LOT5 BLOCK 5 WRI 3RD	0.24	0.28	12.70	0.013%
BENSON, PATRICIA A.	0927208011	27-91-26	LOT 9 & 10 BLOCK 5 WRI 3	0.32	0.37	16.76	0.017%
DARLAND, ALLEN & ROSE, JTRS	0927209001	27-91-26	LOT 12 BLOCK 6 WRI 3	0.16	0.18	8.01	0.008%
DARLAND, ALLEN & DARLAND, ROSE, JTRS	0927209002	27-91-26	LOT 11 BLOCK 6 WRI 3	0.16	0.18	8.08	0.008%
DARLAND, ALLEN & DARLAND, ROSE, JTRS	0927209003	27-91-26	LOT 10 BLOCK 6 WRI 3	0.16	0.19	8.69	0.009%
QUINTANILLA CHACON, RONALD ANTONIO	0927209004	27-91-26	LOT 9 & N 1/2 OF LOT8 BLOCK 6 WRI 3RD	0.24	0.30	13.41	0.013%
GRIFFIN, ISREAL E. & TAWNIA S., JTRS	0927209005	27-91-26	LOT 7 & S 1/2 OF LOT8 BLOCK 6 WRI 3RD	0.24	0.30	13.35	0.013%
MCCLELLAND, RYAN P. & MCCLELLAND, JESSICA L., JTRS	0927209006	27-91-26	LOT 1 & 2 BLOCK 6 WRI 3RD	0.32	0.40	18.04	0.018%
LOUX, QUINN E.	0927209007	27-91-26	LOTS 3 & 4 BLOCK 6 WRI 3RD	0.32	0.40	17.95	0.018%
LOUX, QUINN E.	0927209008	27-91-26	LOTS 5 & 6 BLOCK 6 WRI 3RD	0.32	0.36	16.13	0.016%
GOLD-EAGLE COOPERATIVE	0927210001	27-91-26	LOTS 2 & N 50' OF LOT 3 BLOCK 3 WRIGHT'S 3RD	0.43	0.40	18.31	0.018%
WASHINGTON, SHERLENE M.	0927210002	27-91-26	LOT 1 & N 50' OF LOT4 BLOCK 3 WRI 3RD	0.36	0.43	19.29	0.019%
GONZALEZ, JOEL	0927210003	27-91-26	LOTS 9 & 10 BLOCK 3 WRI 3RD	0.30	0.35	16.04	0.016%
COVINGTON, DARLENE KAY	0927210004	27-91-26	LOTS 7 & 8 BLOCK 3WRI 3RD	0.32	0.38	17.15	0.017%
AINGER FAMILY TRUST, LESLIE & AINGER FAMILY TRUST, BARBARA	0927210005	27-91-26	LOT 6 BLOCK 3 WRI 3	0.16	0.19	8.58	0.009%
FRAKES, KEITH A.	0927210006	27-91-26	LOT 5 BLOCK 3 WRI 3	0.16	0.19	8.58	0.009%
KAISER PROPERTIES I, LLC	0927211001	27-91-26	LOT 8 BLOCK 2 WRI 3	0.21	0.24	10.95	0.011%
KRAUSE, TIMOTHY R.	0927211002	27-91-26	LOT 7 BLOCK 2 WRI 3	0.21	0.25	11.18	0.011%
JDM MANAGEMENT, L.L.C.	0927211003	27-91-26	LOT 6 BLOCK 2 WRI 3	0.21	0.26	11.63	0.012%
LALOR, GARY ARCHIBALD & LALOR, SALLY, JTRS	0927211004	27-91-26	LOT 5 BLOCK 2 WRI 3	0.21	0.26	11.65	0.012%
KAISER, FREDRICK D. & KAISER, MARTHA, JTRS	0927211005	27-91-26	LOT 1 BLOCK 2 WRI 3	0.21	0.25	11.40	0.011%
ASCHE, CINDY LEA	0927211006	27-91-26	LOT 2 & N 6' OF LOT 3 BLOCK 2 WRI 3RD	0.23	0.28	12.83	0.013%

DRAINAGE DISTRICT NO. 94

WRIGHT COUNTY, IOWA

2020

MAIN TILE ASSESSMENT SCHEDULE



LANDOWNER(S)	PIN	S-T-R	BENEFITED PARCEL	ACRES	CLASS (%)	ASSESSMENT UNITS	% SCHEDULE
<b>T91N R26W, EAGLE GROVE TOWNSHIP</b>							
RESH, KELLY A.	0927211007	27-91-26	S 60' OF LOT 3 BLOCK 2 WRI 3RD	0.19	0.23	10.60	0.011%
SCHOO, DAVID LEE & DAVID L. & LINDA R. SCHOO, JTRS	0927211008	27-91-26	LOT 4 BLOCK 2 WRI 3	0.21	0.26	11.72	0.012%
KAISER PROPERTIES I, LLC	0927212001	27-91-26	LOT 8 BLOCK 1 WRI 3	0.21	0.28	12.86	0.013%
OCHOA COYOY, BERKLI GEOVANNY & OCHOA COYOY, OFELIA AZUCELY, JTRS	0927212002	27-91-26	LOT 7 BLOCK 1 WRI 3	0.21	0.27	12.09	0.012%
HILTABIDLE, RICHARD E. & WANEMA E., JTRS	0927212003	27-91-26	LOTS 5 & 6 BLOCK 1 WRI 3RD	0.42	0.43	19.37	0.019%
KAISER, FREDRICK D. & KAISER, MARTHA, JTRS	0927212004	27-91-26	LOTS 1-2-3-4 BLOCK 1 WRI 3	0.85	1.14	51.53	0.052%
LEHMAN, H. JEAN	0927226003	27-91-26	A TR 244.1' X 356.9' IN NE NE 27-91-26 TH PT OF NE NE LY N & W OF RR EXC S	2.00	1.57	71.04	0.071%
LEHMAN, H. JEAN	0927226004	27-91-26	400' & EXC TR 244.1' X 538.7' 27-91-26 S 400' OF TH PT OF NE NE LY N & W OF RR 27-91-26	3.00	2.80	126.59	0.127%
IOWA PUBLIC SERVICE CO.	0927226005	27-91-26	A TRACT 231.13' X 172.34' IN NE NE LY N OF BL 11 COX 2ND ADD 27-91-26	0.46	0.58	26.14	0.026%
DARLAND, ALLEN & DARLAND, ROSE, JTRS	0927227001	27-91-26	LOTS 4 & 5 BLOCK F WRI 2ND	0.33	0.39	17.70	0.018%
HOME OPPORTUNITY, LLC	0927251001	27-91-26	LOTS 6 & 7 EXC E 149' & A TR LY W OF SAME BLOCK F WRI 2ND	0.16	0.19	8.58	0.009%
LUNDA, ROBERT A.	0927251002	27-91-26	W 49' OF E 149' OF 6 & 7 BLOCK F WRI 2ND	0.12	0.12	5.23	0.005%
AG PROCESSING, INC.	0927251003	27-91-26	N 1/2 OF 1-2 & 3 BLOCK F WRI 2ND	0.21	0.25	11.26	0.011%
CALLISTO TRUST	0927251004	27-91-26	S 1/2 OF 1-2-3 BLOCK F WRI 2ND	0.21	0.25	11.27	0.011%
BOYINGTON, BRUCE ALLEN	0927251005	27-91-26		0.25	0.24	10.90	0.011%
COOPER, PHYLLIS, LE REM: WILSON, CONSTANCE A., 1/3 INT & COOPER, JOSEPH G., 1/3 INT & COOPER, LESLIE A., 1/9 INT & COOPER, TRENTON C. & MARCI, JTRS, 1/9 INT & LEGVOLD, KATHRYN J. & BRETT D., JTRS, 1/9 INT	0927251006	27-91-26	E 100' OF 6 & 7 BLOCK F WRI 2ND VAC EAST/WEST ALLEY IN BLOCK F WRIGHT'S 2ND ADD	0.09	0.09	3.92	0.004%
BOYINGTON, BRUCE	0927251007	27-91-26	LOT 10 BLOCK E WRI 2ND	0.17	0.21	9.41	0.009%
AMONSON, KELLY D. & MELODY N., JTRS	0927252001	27-91-26	LOT 9 BLOCK E WRI 2ND	0.17	0.21	9.38	0.009%
DUARTE, ERIKA REYES & LUNA, JAIME LOPEZ, JTRS	0927252002	27-91-26	LOT 1 BLOCK E WRI 2ND	0.17	0.21	9.40	0.009%
AMONSON, KELLY D. & MELODY N., JTRS AMONSON, MELODY N., JTRS	0927252006	27-91-26	LOT 2 BLOCK E WRI 2ND	0.17	0.21	9.36	0.009%
EGESDAL, OLIVER J.	0927252007	27-91-26	W 1/3 OF 3-4 & 5 & N 100' OF CENTER	0.28	0.34	15.33	0.015%
HOWELL, LONNIE P.	0927252008	27-91-26	1/3 OF 3 & 4 BLOCK E WRI 2ND CENTER 1/3 OF LOT 4 & 5 EXC N 46' OF LOT4 BK E WRI 2ND	0.07	0.08	3.83	0.004%
NATURLICH BEAUTY PRODUCTS LLC	0927252009	27-91-26	E 1/3 OF 3-4 & 5 BLOCK E WRI 2ND	0.18	0.22	9.84	0.010%
DRAEGER, LEROY	0927252010	27-91-26	LOT 8 BLOCK E WRI 2ND	0.17	0.21	9.36	0.009%
WILCOX, JOHN T. & WILCOX, DOROTHY L., JTRS	0927252012	27-91-26	LOT 6 & 7 BLOCK E WRI 2ND	0.35	0.43	19.25	0.019%
COVINGTON, DARLENE	0927252013	27-91-26	N 105' OF W 132' OF RESERVE WRI 2ND	0.32	0.40	18.26	0.018%
LARUE, SHEILA	0927253001	27-91-26	S 41 1/4' OF N 146 1/4' OF W 132' OF RESERVE WRI 2ND	0.12	0.15	6.89	0.007%
LARUE, SHEILA	0927253002	27-91-26	S 41 1/4' OF W 150' OF RESERVE WRI 2ND	0.14	0.18	8.05	0.008%
HANUS, BILLY LEE	0927253005	27-91-26	N 130' OF E 167' OF RESERVE WRI 2ND	0.50	0.52	23.40	0.023%
BANWELL, LEIGH F. & SHERRY, JTRS	0927253006	27-91-26	W 95' OF E 150' OF S 140' & A 17' X 54' TR LY ON W OF RESERVE WRI 2ND	0.33	0.34	15.45	0.015%
WINGAARD, IVAN PEDER, LE REM: WINGAARD, JAMES, LE REM: ULSTAD, JEFFREY A.	0927253007	27-91-26	N 41 1/4' OF S 82 1/2' OF W 150' OF RESERVE WRI 2ND & N 41 1/4' OF S 123 384' OR W 132' OF RESERVE WRI 2ND	0.27	0.34	15.49	0.015%
AMONSON, KELLY D. & AMONSON, MELODY N.	0927253010	27-91-26	E 55' OF S 140' OF RESERVE WRI 2ND	0.18	0.23	10.45	0.010%
JAKAMA HOLDINGS, LLC	0927253011	27-91-26	LOTS 1 & 2 BLOCK G WRI 2ND	0.18	0.17	7.82	0.008%
AG PROCESSING INC	0927254001	27-91-26	LOTS 3 & 4 & 5 BLOCK G WRI-2	0.24	0.23	10.38	0.010%
AG PROCESSING, INC.	0927254002	27-91-26					

DRAINAGE DISTRICT NO. 94

WRIGHT COUNTY, IOWA

2020

MAIN TILE ASSESSMENT SCHEDULE



LANDOWNER(S)	PIN	S-T-R	BENEFITED PARCEL	ACRES	CLASS (%)	ASSESSMENT UNITS	% SCHEDULE
<b>T91N R26W, EAGLE GROVE TOWNSHIP</b>							
AG PROCESSING INC.	0927254003	27-91-26	LOTS 6 & 7 BLOCK G WRI 2ND	0.13	0.12	5.57	0.006%
AG PROCESSING, INC.	0927254004	27-91-26	LOT 8 BLOCK G WRI 2ND	0.06	0.06	2.57	0.003%
AG PROCESSING, INC.	0927254005	27-91-26	LOT 9 BLOCK G WRI 2ND	0.05	0.05	2.14	0.002%
AG PROCESSING, INC.	0927254006	27-91-26	LOT 10 BLOCK G WRI 2ND	0.05	0.05	2.14	0.002%
AG PROCESSING, INC.	0927254007	27-91-26	THAT PART OF VAC 4TH ST & EAGLE AVE	0.23	0.22	9.88	0.010%
JORGENSEN, KELLY S. & JORGENSEN, CURT B., JTRS	0927255001	27-91-26	LOTS 12-13-14-15 BLOCK H WRI 2ND	0.32	0.39	17.44	0.017%
JORGENSEN, KELLY S. & JORGENSEN, CURT B.	0927255002	27-91-26	LOTS 9-10-11 BLOCK HWRI 2ND	0.24	0.23	10.57	0.011%
MCVICKER, BEVERLY	0927255003	27-91-26	W 90' OF LOTS 6-7-8 BLOCK H WRI 2ND	0.16	0.19	8.49	0.008%
JOHNSON, SHARON M.	0927255004	27-91-26	E 50' OF LOTS 6-7-8 BLOCK H WRI 2ND	0.09	0.11	4.83	0.005%
AHRENS, SHERYL A. C/O ROBERT AHRENS	0927255005	27-91-26	LOTS 1 & 2 BLOCK H WRI 2ND	0.32	0.39	17.49	0.017%
JAKAMA HOLDINGS, LLC	0927255006	27-91-26	LOT 3 BLOCK H WRI 2ND	0.16	0.19	8.74	0.009%
JAKAMA HOLDINGS, LLC	0927255007	27-91-26	LOT 4 BLOCK H WRI 2ND	0.16	0.19	8.74	0.009%
HOANG, SAM A. & HOANG, CINDY, JTRS	0927255008	27-91-26	LOT 5 BLOCK H WRI 2ND	0.16	0.19	8.68	0.009%
EAGLE GROVE COMMUNITY DEVELOPMENT CORPORATION	0927256001	27-91-26	LOT 10 BLOCK I WRI 2ND	0.16	0.17	7.75	0.008%
EAGLE GROVE COMMUNITY DEVELOPMENT CORPORATION	0927256002	27-91-26	LOT 9 BLOCK I WRI 2ND	0.16	0.17	7.75	0.008%
BEKERIS, DEREK	0927256003	27-91-26	LOT 8 BLOCK I WRI 2ND	0.16	0.21	9.51	0.010%
HOWELL, ESTHER C.	0927256004	27-91-26	LOTS 6 & 7 BLOCK I WRI 2ND	0.32	0.42	19.18	0.019%
ENDRISS, NANCY A.	0927256005	27-91-26	LOTS 1 & 2 BLOCK I WRI 2ND	0.32	0.42	19.08	0.019%
WILLARD, SANDRA M.	0927256006	27-91-26	LOT 3 BLOCK I WRI 2ND	0.16	0.21	9.54	0.010%
WILLARD, SANDRA M.	0927256007	27-91-26	W 35' OF LOTS 4 & 5 BLOCK I WRI 2ND	0.08	0.11	4.79	0.005%
EAGLE GROVE COMMUNITY DEVELOPMENT CORPORATION	0927256008	27-91-26	LOTS 4 & 5 EXC W 1/2W 1/2 BLOCK I WRI 2ND	0.24	0.32	14.34	0.014%
AG PROCESSING, INC.	0927257001	27-91-26	TRACT E OF RR & W OF EAGLE AVE. SW NE 27-91-26	0.77	1.25	56.45	0.056%
AG PROCESSING INC.	0927257002	27-91-26	N 50' OF TRI TR W OF BLOCK B WRIGHTS 1ST	0.09	0.09	3.86	0.004%
AG PROCESSING, INC.	0927257005	27-91-26	THAT PART OF VACATED 4TH ST	0.08	0.08	3.43	0.003%
JAKAMA HOLDINGS, LLC	0927259001	27-91-26	LOTS 7 & 8 BLOCK A WRIGHTS 1ST	0.32	0.43	19.33	0.019%
JAKAMA HOLDINGS, LLC	0927259002	27-91-26	N 40' OF LOTS 5 & 6, BLOCK A WRI 1ST	0.09	0.12	5.51	0.006%
AINGER FAMILY TRUST, LESLIE & AINGER FAMILY TRUST, BARBARA	0927259003	27-91-26	W 1/2 OF LOTS 9 & 10 & ALLEY ADJ ON W BLOCK A WRI 1ST	0.21	0.28	12.79	0.013%
FIBIKAR, SHANE	0927259004	27-91-26	E 1/2 OF LOTS 9 & 10 BLOCK A WRI 1ST	0.16	0.22	9.79	0.010%
STILTZ, MEGAN M.	0927259005	27-91-26	S 100' OF LOTS 5 & 6 BLOCK A WRI 1ST	0.23	0.31	14.12	0.014%
SANCHEZ, ABRAHAM	0927259006	27-91-26	W 1/2 OF LOT 3 & LOT 4 BLOCK A WRI 1ST	0.24	0.33	14.73	0.015%
HILL, RYAN & JULIE, JTRS	0927259007	27-91-26	E 1/2 OF LOT 3 & W 1/2 OF LOT 2 BLOCK A WRI 1ST	0.16	0.22	9.82	0.010%
HILL, RYAN & JULIE, JTRS	0927259008	27-91-26	W 1/2 OF LOT 1 & E 1/2 OF 2 BLOCK A WRIGH	0.16	0.22	9.82	0.010%
WEPEL, GLORIA & WEPEL, LYNDSEY, JTRS	0927276001	27-91-26	N 86' OF LOT 6 BLOCK 11 COX 2	0.10	0.13	5.67	0.006%
WEPEL, GLORIA & WEPEL, LYNDSEY, JTRS	0927276002	27-91-26	N 86' OF LOT 5 BLOCK 11 COX 2	0.10	0.12	5.65	0.006%
TORKELSON PROPERTIES, LLC	0927276003	27-91-26	N 86' OF LOT 4 BLOCK 11 COX 2	0.10	0.12	5.65	0.006%
WHIPPLE, CHRISTINA	0927276004	27-91-26	VIN# 98A17541 TITLE# 99AA49949				
WEPEL, GLORIA & WEPEL, LYNDSEY, JTRS	0927276007	27-91-26	S 34' OF LOTS 5-6 N 33' OF LOTS 7-8 & ALLEY BET BLOCK 11 COX 2	0.20	0.25	11.30	0.011%

DRAINAGE DISTRICT NO. 94  
 WRIGHT COUNTY, IOWA  
 2020



MAIN TILE ASSESSMENT SCHEDULE

LANDOWNER(S)	PIN	S-T-R	BENEFITED PARCEL	ACRES	CLASS (%)	ASSESSMENT UNITS	% SCHEDULE
<b>T91N R26W, EAGLE GROVE TOWNSHIP</b>							
WEPEL, GLORIA & WEPEL, LYNDSEY, JTRS	0927276008	27-91-26	S 34' OF LOTS 3-4 & 1/2 ALLEY ADJ SAME ON SOUTH BK 11 COX 2	0.10	0.12	5.65	0.006%
WALKER, DAVID PAUL	0927276009	27-91-26	S 34' OF LOTS 1-2 & N 33' OF LOTS 11-12 & ALLEY BETWEEN BLOCK 11 COX 2	0.20	0.25	11.26	0.011%
WEETS, JESSEDA L.	0927276010	27-91-26	S 87' OF LOTS 7 & 8 BLOCK 11 COX 2	0.20	0.25	11.30	0.011%
WALROD, CAROLE J.	0927276012	27-91-26	S 87' OF LOT 12 & S 87' OF E 40' OF LOT 11 BLOCK 11 COX 2	0.18	0.22	10.06	0.010%
CAHALAN INVESTMENTS, LLC	0927276013	27-91-26	LOTS 9 & 10 EXC N 33' & W 10' OF S 87' OF LOT 11 BLK 11 COX 2	0.22	0.27	12.43	0.012%
WEPEL, GLORIA & WEPEL, LYNDSEY, JTRS	0927276014	27-91-26	N 33' OF LOTS 9 & 10 & S 1/2 OF ALLEY ADJBLK 11 COX 2	0.10	0.12	5.65	0.006%
WHIPPLE, LAVERE L.	0927276015		N 86' OF LOT 1 BLOCK 11 COX 2	0.10	0.12	5.65	0.006%
WHIPPLE, LAVERE L.	0927276016	27-91-26	TITLE: 99AA62712 VIN: 3091 N 86' OF LOT 2 BLOCK 11 COX-2	0.10	0.12	5.65	0.006%
RILEY, KEITH A.	0927277001	27-91-26	W 60' OF S 150' OF COX'S RESERVE COX 2	0.21	0.25	11.47	0.011%
RETHMAN, RICHARD D. & RETHMAN, SHELLEY A., JTRS	0927277003	27-91-26	PARCEL # 2 IN COX'S RESERVE COX 2ND & NE NE 27-91-26 LY S & E OF RR	4.85	12.55	567.69	0.568%
RETHMAN, RICHARD D. & RETHMAN, SHELLEY A., JTRS	0927277004	27-91-26	S 91' OF E 115' OF COX RESERVE COX 2ND	0.24	0.60	27.15	0.027%
RILEY, KEITH	0927277005	27-91-26	PARCEL H OF PARCEL 11N RESERVE COX-S 2ND ADD	0.24	0.49	22.16	0.022%
OGIBA, JOSEPH & SUSAN D., JTRS	0927277006	27-91-26	PARCEL # 1 IN COX'S RESERVE & IN NE NE 27-91-26 LY S & E OFRR COX 2ND EXC 2PAR	4.25	6.66	301.20	0.301%
RILEY, KEITH	0927277007	27-91-26	PARCEL G OF PARCEL 11N RESERVE COX'S 2ND ADD	0.07	0.08	3.82	0.004%
BEISELL, RUSSELL E. & SHELLEY L., JTRS	0927278001	27-91-26	LOT 3 & W 1/2 OF LOT2 BLOCK 9 COX	0.21	0.27	12.30	0.012%
FDG PROPERTIES, LLC	0927278002	27-91-26	LOT 1 & E 1/2 OF LOT2 BLOCK 9 COX	0.21	0.27	12.30	0.012%
STILTZ, JAMES GREGORY & KATHLEEN MARIE, JTRS	0927278003	27-91-26	LOTS 9 & 10 BLOCK 9 COX	0.28	0.36	16.40	0.016%
STILTZ, JAMES GREGORY & KATHLEEN MARIE, JTRS	0927278004	27-91-26	LOT 11 BLOCK 9 COX	0.14	0.18	8.20	0.008%
HILL, ROBERT & LORETTA	0927278005	27-91-26	LOT 12 BLOCK 9 COX	0.14	0.18	8.20	0.008%
KNAACK, TAMMY & VASQUEZ, MARCO A., JTRS	0927279001	27-91-26	LOT 6 BLOCK 2 COX	0.14	0.17	7.91	0.008%
WILLIAMS, MISTY J.	0927279002	27-91-26	W 1/2 OF LOT 4 & LOT5 BLOCK 2 COX	0.21	0.26	11.86	0.012%
SMITH, DONALD D. & CAROL A., JTRS	0927279003	27-91-26	LOT 3 & E 1/2 OF LOT4 BLOCK 2 COX	0.21	0.26	11.86	0.012%
GILMORE CONBOY, CONNIE K.	0927279004	27-91-26	LOTS 1 & 2 BLOCK 2 COX	0.28	0.35	15.81	0.016%
HILL, ROBERT LESLIE & HILL, LORETTA JEAN, JTRS	0927279005	27-91-26	LOT 7 BLOCK 2 COX	0.14	0.18	7.95	0.008%
EAGLE GROVE COMMUNITY DEVELOPMENT CORPORATION	0927279006	27-91-26	LOT 8 BLOCK 2 COX	0.14	0.18	7.96	0.008%
EAGLE GROVE COMMUNITY DEVELOPMENT CORPORATION	0927279007	27-91-26	LOT 9 BLOCK 2 COX	0.14	0.18	7.94	0.008%
SEABA, SUELLEN	0927279008	27-91-26	LOT 10 BLOCK 2 COX	0.14	0.18	7.92	0.008%
EAGLE GROVE COMMUNITY DEVELOPMENT CORPORATION	0927279009	27-91-26	LOT 11 BLOCK 2 COX	0.14	0.17	7.92	0.008%
EAGLE GROVE COMMUNITY DEVELOPMENT CORPORATION	0927279010	27-91-26	LOT 12 BLOCK 2 COX	0.14	0.17	7.92	0.008%
MMDUKE, LLC	0927280001	27-91-26	LOTS 3 & 4 BLOCK 1 COX	0.28	0.35	15.74	0.016%
MMDUKE, LLC	0927280002	27-91-26	LOTS 1 & 2 BLOCK 1 COX	0.28	0.35	15.75	0.016%
HILPIPRE, KRISTI K. & LUNDY L., JTRS	0927280003	27-91-26	LOTS 5 & 6 BLOCK 1 COX	0.28	0.35	15.90	0.016%
MYERS, TERESA L.	0927280004	27-91-26	LOTS 7 & 8 BLOCK 1 COX	0.28	0.35	15.92	0.016%
NIGGEMEYER, DEBBIE	0927281001	27-91-26	W 96' OF LOT 7 BLOCK 12 COX 2	0.13	0.16	7.31	0.007%
OHLERKING, JOSEPHINE H.	0927281002	27-91-26	E 45 3/4' OF LOT 7 BLOCK 12 COX 2ND	0.06	0.08	3.41	0.003%
OHLERKING, JOSEPHINE H.	0927281003	27-91-26	LOT 8 BLOCK 12 COX 2	0.19	0.34	15.38	0.015%

# DRAINAGE DISTRICT NO. 94

WRIGHT COUNTY, IOWA

2020

## MAIN TILE ASSESSMENT SCHEDULE



LANDOWNER(S)	PIN	S-T-R	BENEFITED PARCEL	ACRES	CLASS (%)	ASSESSMENT UNITS	% SCHEDULE
<b>T91N R26W, EAGLE GROVE TOWNSHIP</b>							
C & C PROPERTY, LLC	0927281004	27-91-26	LOTS 5 & 6 BLOCK 12 COX 2	0.27	0.33	15.15	0.015%
ARNE, MILDRED	0927281007	27-91-26	LOT 1 BLOCK 12 COX 2	0.13	0.16	7.12	0.007%
MMDUKE, LLC	0927281008	27-91-26	LOTS 2, 3 & 4 BLOCK 12 COX 2	0.81	0.99	44.68	0.045%
CAHALAN INVESTMENTS, L.L.C.	0927282001	27-91-26	E 92' OF W 100' OF LOTS 7 & 8 BLOCK 3 COX	0.21	0.28	12.59	0.013%
BIONDAHL, DENISE	0927282002	27-91-26	E 40' OF LOT 7 & 8 & W 1/3 OF LOTS 9 & 10 BLOCK 3 COX	0.20	0.26	11.61	0.012%
PREMO, RICHARD, JR. & CAROLINE, JTRS	0927282003	27-91-26	E 2/3 OF LOTS 9 & 10 BLOCK 3 COX	0.21	0.26	11.94	0.012%
BURMEISTER, GERALD R. & JESSICA L., JTRS	0927282004	27-91-26	LOT 6 & W 31' OF LOT5 BLOCK 3 COX	0.26	0.34	15.53	0.016%
HELGEVOLD, KARL & HELGEVOLD, JODIE M., JTRS	0927282005	27-91-26	LOTS 3 & 4 & E 19' OF LOT 5 BLOCK 3 COX	0.38	0.50	22.70	0.023%
CLOUSE, JOSHUA T.	0927282006	27-91-26	LOTS 1 & 2 BLOCK 3 COX	0.32	0.42	18.92	0.019%
STARLING, PARRY	0927283001	27-91-26	W 90' OF LOTS 7 & 8 BLOCK 4 COX	0.21	0.26	11.94	0.012%
STARLING, MARY	0927283002	27-91-26	E 50' OF LOTS 7 & 8 BLOCK 4 COX	0.12	0.15	6.82	0.007%
C & C PROPERTY, LLC	0927283004	27-91-26	E 1/2 OF LOTS 9 & 10 BLOCK 4 COX	0.16	0.23	10.60	0.011%
WRIGHT PROPERTY MANAGEMENT, LLC	0927283005	27-91-26	LOTS 5 & 6 BLOCK 4 COX	0.32	0.51	23.08	0.023%
MCCUTCHEON, PATRICIA A. & ROBERT N., JTRS	0927283006	27-91-26	LOT 4 BLOCK 4 COX	0.16	0.27	12.27	0.012%
HERNANDEZ, SANDRA PATRICIA MARTINEZ	0927283007	27-91-26	LOT 3 BLOCK 4 COX	0.16	0.27	12.29	0.012%
MIDDLETON, STEVE M.	0927283008	27-91-26	LOTS 1 & 2 BLOCK 4 COX	0.32	0.54	24.61	0.025%
BOYINGTON, RAYLENE A.	0927283010	27-91-26	W 1/2 OF LOTS 9 & 10 AND VACATED ALLEY BETWEEN LOTS 7,8,9 & 10 BLOCK 4 COX ADDITION	0.16	0.20	9.10	0.009%
MADSON, ROBERT JAMES & MADSON, SARA LYNN, JTRS	0927284001	27-91-26	N 55' OF LOTS 3 & 4 BLOCK 5 COX	0.13	0.19	8.75	0.009%
MADSON, ROBERT	0927284002	27-91-26	S 45' OF LOTS 3 & 4 BLOCK 5 COX	0.10	0.17	7.67	0.008%
AMONSON, KYLE & AMONSON, GWENDOLYN, JTRS	0927284003	27-91-26	LOTS 1 & 2 BLOCK 5 COX	0.23	0.37	16.67	0.017%
SCHUELKE, LOREN L. & NANCY L., JTRS	0927284006	27-91-26	LOTS 7 & 8 BLOCK 5 COX	0.32	0.54	24.54	0.025%
VANDENBIRD, LLC	0927284007	27-91-26	LOTS 5 & 6 BLOCK 5 COX	0.32	0.54	24.57	0.025%
BEISELL, RUSSELL E. & SHELLEY L., JTRS	0927285001	27-91-26	LOTS 5 & 6 BLOCK 13 COX 2ND	0.28	0.46	20.64	0.021%
BERNSMEIER, MARK E.	0927285002	27-91-26	LOTS 3 & 4 BLOCK 13 COX 2ND	0.28	0.45	20.52	0.021%
ESTRADA, AMBER L.	0927285003	27-91-26	LOTS 1 & 2 BLOCK 13 COX 2	0.28	0.46	20.97	0.021%
OLESON, ABBEY N.	0927285004	27-91-26	LOTS 7 & 8 BLOCK 13 COX 2ND	0.28	0.47	21.48	0.021%
LEE REVOCABLE TRUST, DENNIS M.	0927285005	27-91-26	LOTS 9-10 & S 1/2 ALLEY ADJ SAME ON N BLOCK 13 COX 2ND	0.30	0.52	23.32	0.023%
AMONSON, GWENDOLYN J.	0927285006	27-91-26	LOT 11 & 1/2 OF ALLEY ADJ SAME ON N BLOCK 13 COX 2ND	0.15	0.27	12.03	0.012%
VISOCSKY, PATRICIA K.	0927285007	27-91-26	LOT 12 BLOCK 13 COX 2	0.14	0.25	11.23	0.011%
TERWILLIGER, RANDY L. & TERWILLIGER, JANICE K., JTRS	0927286001	27-91-26	LOT 6 & W 1/2 OF LOT5 BLOCK 7 COX	0.22	0.24	10.87	0.011%
TERWILLIGER, RANDY L. & TERWILLIGER, JANICE K., JTRS	0927286002	27-91-26	LOT 4 & E 1/2 OF LOT5 BLOCK 7 COX	0.22	0.29	13.23	0.013%
TERWILLIGER, RANDY LEE & TERWILLIGER, JANICE KAY, JTRS	0927286003	27-91-26	LOT 3 BLOCK 7 COX	0.15	0.20	9.19	0.009%
TERWILLIGER, STACY LYNN	0927286004	27-91-26	N 1/2 OF LOT 1 & LOT2 BLOCK 7 COX	0.15	0.20	9.25	0.009%
THAYER, BRADY C.	0927286005	27-91-26	S 1/2 OF LOT 1 & LOT2 BLOCK 7 COX	0.15	0.21	9.40	0.009%
WINDS OF FIRE	0927286008	27-91-26	LOTS 7-8-9-10 & LOT 11 EXC E 8' BLOCK 7 COX (CHURCH)	0.56	0.77	35.03	0.035%
MMDUKE, LLC	0927286010	27-91-26	E 8' OF LOT 11 & LOT 12 BLOCK 7 COX	0.13	0.18	8.15	0.008%
ARNE, TERRY G. & VICKY J., JTRS	0927287003	27-91-26	LOT 4 & W 1/2 OF LOT3 BLOCK 6 COX	0.22	0.37	16.81	0.017%
SUNDBERG, MURRIL DEAN & SUNDBERG, ELIZABETH WENDY, JTRS	0927287006	27-91-26	LOT 7 BLOCK 6 COX	0.12	0.18	8.18	0.008%
LUNDA, ROBERT A.	0927287007	27-91-26	LOT 8 BLOCK 6 COX	0.12	0.19	8.57	0.009%
ASCHE, JOHN D. & LUCINDA, JTRS	0927287008	27-91-26	LOT 9 & W 1/2 OF LOT10 BLOCK 6 COX	0.17	0.29	13.06	0.013%

DRAINAGE DISTRICT NO. 94

WRIGHT COUNTY, IOWA

2020

MAIN TILE ASSESSMENT SCHEDULE



LANDOWNER(S)	PIN	S-T-R	BENEFITED PARCEL	ACRES	CLASS (%)	ASSESSMENT UNITS	% SCHEDULE
<b>T91N R26W, EAGLE GROVE TOWNSHIP</b>							
ARNE, TERRY G. & ARNE, VICKY J., JTRS	0927287012	27-91-26	LOT 1 & 2 & E 1/2 OF LOT 3 BLOCK 6 COX	0.37	0.63	28.28	0.028%
ANDERSON, MICHAEL W. & ANDERSON, ANGELA M., JTRS	0927287013	27-91-26	LOT 11 & 12 & E 1/2 OF LOT 10 BLOCK 6 COX	0.17	0.29	13.12	0.013%
ARNE, TERRY GENE & ARNE, VICKY JANE	0927287014	27-91-26	LOTS 5 & 6 BLOCK 6 COX	0.30	0.45	20.39	0.020%
JOHNSTON, FRANCIS D. & JOHNSTON, PATRICIA A.	0927288001	27-91-26	LOT 4 BLOCK 8 COX	0.15	0.26	11.84	0.012%
JENNINGS, WAYNE C. & LYNNE R., JTRS	0927288002	27-91-26	LOTS 2 & 3 BLOCK 8 COX	0.30	0.53	23.78	0.024%
CAQUELIN, BILL	0927288003	27-91-26	LOT 1 BLOCK 8 COX	0.15	0.26	11.74	0.012%
TORKELSON PROPERTIES, LLC	0927288004	27-91-26	LOTS 5 & 6 BLOCK 8 COX	0.23	0.33	14.94	0.015%
KLASSIE, S. H.	0927288005	27-91-26	LOT 7 BLOCK 8 COX	0.12	0.21	9.59	0.010%
TORKELSON PROPERTIES, LLC	0927288006	27-91-26	LOT 8 BLOCK 8 COX	0.12	0.21	9.59	0.010%
MARROQUIN MONTUFAR, CANDIDO & MARROQUIN ARGUETA, GERVER NOEL, JTRS	0927289001	27-91-26	LOT 6 BLOCK 14 COX 2	0.15	0.25	11.51	0.012%
SPANGLER, FRED A. & SHIRLEY A., JTRS	0927289004	27-91-26	LOT 3 BLOCK 14 COX 2	0.15	0.27	12.03	0.012%
WILDE, CLARENCE F., LE & WILDE, BETTY L., LE REM: WILDE, CHAD F. & WILDE, ANN M., JTRS	0927289005	27-91-26	LOTS 1 & 2 BLOCK 14 COX 2ND	0.30	0.73	33.08	0.033%
B & E CONSTRUCTION, INC.	0927289006	27-91-26	LOTS 7, 8 & 9 BLOCK 14 COX 2ND (CO SHED)	0.34	0.82	37.07	0.037%
B & E CONSTRUCTION, INC.	0927289007	27-91-26	LOT 10 BLOCK 14 COX 2 (CO YARD)	0.12	0.29	13.21	0.013%
ANDERSON, LARRY E. & KATHLEEN A., JTRS	0927289008	27-91-26	LOT 11 BLOCK 14 COX 2	0.12	0.21	9.62	0.010%
ANDERSON, LARRY E. & KATHLEEN A., JTRS	0927289009	27-91-26	LOT 12 BLOCK 14 COX 2	0.12	0.21	9.62	0.010%
GOATER, COLE	0927289010	27-91-26	LOT 4 & 5 BLOCK 14 COX 2	0.30	0.52	23.43	0.023%
CHAMBERS, DONALD R. & DONNA M., JTRS	0927426001	27-91-26	LOTS 5 & 6 BLOCK 37 CAD 1ST	0.35	0.50	22.71	0.023%
WINDS OF FIRE	0927426002	27-91-26	LOTS 5 & 6 BLOCK 37 CAD 1ST	0.25	0.29	13.18	0.013%
ASCHE, JESSICA L.	0927426003	27-91-26	LOT 4 & W 1/2 OF LOT 3 BLOCK 37 CAD 1ST	0.26	0.30	13.71	0.014%
DAY, CHAD D. & ARACELI, JTRS	0927426004	27-91-26	LOT 2 & E 1/2 OF LOT 3 BLOCK 37 CAD 1	0.17	0.24	11.02	0.011%
WISECUP, LORI	0927426005	27-91-26	LOT 1 BLOCK 37 CAD 1	0.17	0.24	11.02	0.011%
WISECUP, LORI	0927426006	27-91-26	LOTS 7 & 8 BLOCK 37 CAD 1ST	0.34	0.40	17.92	0.018%
NGUYEN, VANG	0927426007	27-91-26	LOT 9 BLOCK 37 CAD 1	0.17	0.24	11.02	0.011%
STEIG, LEONARD B. & STEIG, CHERYL M., JTRS	0927426008	27-91-26	LOT 10 BLOCK 37 CAD 1	0.17	0.24	11.02	0.011%
TORKELSON PROPERTIES, LLC	0927427001	27-91-26	LOTS 11 & 12 BLOCK 37 CAD 1ST	0.34	0.49	22.04	0.022%
JENNINGS, WAYNE C. & LYNNE R., JTRS	0927427002	27-91-26	LOT 1 BLOCK 38 CAD 1 & 95 X 300	1.10	1.84	83.02	0.083%
WILLIE, MICHAEL J.	0927427003	27-91-26	ADJON NORTH	0.14	0.21	9.49	0.009%
WILLIE, MICHAEL JAMES	0927427004	27-91-26	LOT 2 BLOCK 38 CAD1	0.14	0.20	9.11	0.009%
HOANG, SAM & CINDY, JTRS	0927427005	27-91-26	LOT 3 BLOCK 38 CAD 1	0.16	0.23	10.36	0.010%
HOANG, SAM & CINDY, JTRS	0927427006	27-91-26	LOT 4 BLOCK 38 CAD 1	0.14	0.24	10.88	0.011%
WRIGHT PROPERTY MANAGEMENT, LLC	0927427007	27-91-26	LOT 8 BLOCK 38 CAD 1	0.14	0.24	10.88	0.011%
CITY OF EAGLE GROVE	0927428001	27-91-26	LOT 7 BLOCK 38 CAD 1	0.14	0.24	11.00	0.011%
SCHAEFER, JENNA JO & AHRENS, SHAWN JAMES	0927428002	27-91-26	LOTS 5 & 6 BLOCK 38 CAD 1ST	0.30	0.52	23.38	0.023%
THUL LE, LOIS J. REM: THUL, MICHAEL; THUL, LAWRENCE; FISHER, MARLENA; MESSERLY, CAROL; GAILLARD, LUANN	0927428003	27-91-26	LOTS 1-2-3-4-5-6 & N 1/2 OF ALLEY ON S BLOCK 39 CAD 1ST DAY CARE CENTER	1.15	2.82	127.68	0.128%
B & E CONSTRUCTION, INC.	0927429001	27-91-26	LOTS 7-8-9-10 & W 20' OF 11 & S 1/2 OF ALLEY ADJ EACH ON N BLOCK 39 CAD 1ST	0.83	1.50	67.77	0.068%
			LOT 12 & E 30' OF LOT 11 BLOCK 39 CAD 1ST	0.29	0.53	23.81	0.024%
			BLK 40 EXC S 104' OF LOT 4 & EXC W 50' OF S 104' OF LOT 5 CADWELLS 1ST	1.24	3.11	140.46	0.140%

# DRAINAGE DISTRICT NO. 94

WRIGHT COUNTY, IOWA

2020

## MAIN TILE ASSESSMENT SCHEDULE



LANDOWNER(S)	PIN	S-T-R	BENEFITED PARCEL	ACRES	CLASS (%)	ASSESSMENT UNITS	% SCHEDULE
<b>T91N R26W, EAGLE GROVE TOWNSHIP</b>							
BREKKE REVOCABLE TRUST, RONALD L.	0927429002	27-91-26	S 104' OF LOT 4 & W 50' OF S 104' OF LOTS BLOCK 40 CAD 1	0.27	0.49	22.37	0.022%
WILLARD, TERRY & WILLARD, SANDRA M., JTRS	0927430001	27-91-26	LOT 6 BLOCK 44 CAD 1	0.18	0.26	11.70	0.012%
WILLARD, TERRY A. & SANDRA M., JTRS	0927430002	27-91-26	LOT 5 BLOCK 44 CAD 1	0.18	0.26	11.65	0.012%
THIELEN, THOMAS & JEAN A., JTRS	0927430003	27-91-26	LOT 4 BLOCK 44 CAD 1	0.18	0.26	11.65	0.012%
KNUDSEN, KURT D.	0927430004	27-91-26	LOTS 7 & 8 BLOCK 44 CAD 1ST	0.36	0.52	23.38	0.023%
ALLEN, LORRIE J.	0927430005	27-91-26	LOT 9 BLOCK 44 CAD 1	0.18	0.26	11.68	0.012%
HERNANDEZ, MARIO & HERNANDEZ, DOLORES, JTRS	0927430006	27-91-26	LOT 10 BLOCK 44 CAD 1	0.18	0.26	11.69	0.012%
J.K. PROPERTIES OF BREVARD, INC.	0927430007	27-91-26	N 72' OF LOTS 1, 2 & 3 BLOCK 44 CAD 1ST	0.25	0.36	16.18	0.016%
THIELEN, THOMAS & JEAN A., JTRS	0927430008	27-91-26	S 60' OF LOTS 1, 2 & 3 BLOCK 44 CAD 1ST	0.21	0.30	13.59	0.014%
C & C PROPERTY, LLC	0927430009	27-91-26	N 50' OF LOTS 11 & 12 BLOCK 44 CAD 1	0.12	0.17	7.77	0.008%
TRUSTY, ABBY M.	0927430010	27-91-26	LOTS 11 & 12 EXC N 50' BLOCK 44 CAD 1	0.24	0.34	15.54	0.016%
BUSICK, BLAKE S.	0927431001	27-91-26	LOTS 4, 5 & 6 BLOCK43 CAD 1ST	0.53	0.62	27.87	0.028%
MCGRATH, JOHN & MCGRATH, SANDRA L., JTRS	0927431002	27-91-26	LOTS 1, 2 & 3 BLOCK43 CAD 1ST	0.52	0.75	33.75	0.034%
MMDUKE, LLC	0927431003	27-91-26	N 59' OF W 10' OF LOT 9 & N 59' OF LOT 7 & 8 BLOCK 43 CAD 1ST	0.15	0.22	9.73	0.010%
BF210, LLC	0927431004	27-91-26	S 95' OF LOTS 7 & 8 BLOCK 43 CADWELLS 1 W 10' OF S 95' & E 40' OF LOT 9 BLOCK 43 CAD 1ST	0.16	0.23	10.53	0.011%
STEIL, DENNIS J.	0927431005	27-91-26	LOT 10 BLOCK 43 CAD 1	0.18	0.26	11.79	0.012%
THOMASON, RALPH NEIL & PATRICIA JEAN, JTRS	0927431006	27-91-26	LOTS 11 & 12 EXC S 77.99' BLOCK 43 CAD 1ST	0.17	0.25	11.14	0.011%
RERP, LLC	0927431009	27-91-26	LOTS 5-6 EXC S 70' BLOCK 42 CAD 1ST	0.19	0.34	15.29	0.015%
KLING, BRANDY SUE	0927432001	27-91-26	LOT 4 & W 5' OF LOT 3 BLOCK 42 CAD 1ST	0.19	0.35	15.76	0.016%
MORK, CORRIE A/K/A OVERGAARD, CORRINE SUSAN	0927432002	27-91-26	S 78.73' OF LOTS 1 & LOT 2 BLOCK 42 CADWELLS 1ST	0.18	0.33	14.98	0.015%
CITY OF EAGLE GROVE, IOWA	0927432005	27-91-26	S 70' OF LOTS 5 & LOT 6 BLOCK 42 CAD 1ST	0.16	0.28	12.69	0.013%
HILL, ROBERT P. & HILL, KATHLEEN M., JTRS	0927432006	27-91-26	LOTS 7-8-9- & LOT 10 EXC E 25' BLOCK 42 CAD 1ST	0.61	1.11	50.35	0.050%
HANDICAP VILLAGE	0927432007	27-91-26	E 25' OF LOT 10 & LOT 11 BLOCK 42 CADWELLS 1ST	0.26	0.48	21.52	0.022%
THIELEN, MAUREEN	0927432008	27-91-26	LOT 12 BLOCK 42 CAD 1	0.17	0.31	14.08	0.014%
JOHNSON, SANDRA S.	0927432009	27-91-26	E 45' OF LOT 3 & N 70' OF LOTS 1 & 2 BLOCK 42 CADWELLS 1	0.32	0.59	26.59	0.027%
BEEBE, ERIC W. & BEEBE, MARY ANN, JTRS	0927432010	27-91-26	N 80.25' OF LOTS 2 & LOT 3 BLOCK 41 CAD 1	0.22	0.41	18.42	0.018%
NELSON, RICKY L.	0927433001	27-91-26	S 68' OF LOT 3 & S 68' OF LOT 2 EXC E 13' OF S 61' & 1/2 OF ALLEY ADJ SAME ON S BLOCK 41 CAD 1ST	0.20	0.37	16.75	0.017%
SMITH FAMILY TRUST, RUBY J.	0927433002	27-91-26	LOT 1, E 13' OF S 61FT OF LOT 2 & N 1/2 OF ALLEY ADJ SAME ONS BLOCK 41 CAD 1	0.25	0.46	20.66	0.021%
SANDERS, ROY & JANET, JTRS	0927433003	27-91-26	LOT 4 & W 6 1/2' OF LOT 5 & S 1/2 OF ALLEY ADJ ON NORTH BLOCK 41 CAD-1	0.25	0.46	20.81	0.021%
JOHNSON, SANDRA S.	0927433004	27-91-26	E 52' OF LOT 5 & W 13' OF LOT 6 & S 1/2 OF ALLEY ADJ ON N BK 41 CAD-1	0.24	0.44	19.97	0.020%
SHEATS, CHARLES D. & SHEATS, VIRGINIA L., JTRS	0927433005	27-91-26	1/2 OF ALLEY & E 48' OF LOT 6 BLOCK 41 CAD 1ST	0.17	0.31	14.01	0.014%
JORGENSEN, JEAN A., LE REM: JORGENSEN, THOMAS R. RESOURCES GROUP INC.	0927433006 0927434001	27-91-26 27-91-26	LOT 6 BLOCK 45 CAD 2	0.16	0.24	11.02	0.011%

# DRAINAGE DISTRICT NO. 94

WRIGHT COUNTY, IOWA

2020

## MAIN TILE ASSESSMENT SCHEDULE



LANDOWNER(S)	PIN	S-T-R	BENEFITED PARCEL	ACRES	CLASS (%)	ASSESSMENT UNITS	% SCHEDULE
<b>T91N R26W, EAGLE GROVE TOWNSHIP</b>							
AIINGER FAMILY TRUST, LESLIE & AIINGER FAMILY TRUST, BARBARA	0927434002	27-91-26	LOT 5 BLOCK 45 CAD 2	0.16	0.24	11.02	0.011%
ZIGRANG LIVING TRUST, JAMES R. & ZIGRANG LIVING TRUST, JACQUELYN R.	0927434003	27-91-26	LOT 4 BLOCK 45 CAD 2	0.16	0.24	11.02	0.011%
ROBINSON, DARREN K. & ROBINSON, REINA M., JTRS	0927434004	27-91-26	LOT 3 BLOCK 45 CAD 2	0.16	0.24	11.02	0.011%
BRUHL, GEORGIANA, LE REM: BRUHL, ELWYN, 1/4 INT & THOMPSON, DIANA, 1/4 INT & BRUHL, CECIL, 1/4 INT & BRUHL, JOHN, 1/4 INT	0927434005	27-91-26	LOTS 1 & 2 BLOCK 45 CAD 2ND	0.32	0.48	21.89	0.022%
WILLARD, MICHAEL D.	0927434006	27-91-26	LOT 7 & W 1/2 OF LOT8 BLOCK 45 CAD 2ND	0.24	0.37	16.64	0.017%
WILLARD, JEAN	0927434007	27-91-26	LOT 9 & E 1/2 OF LOT8 BLOCK 45 CAD 2ND	0.24	0.36	16.50	0.017%
PETERSON, JOHN R.	0927434008	27-91-26	LOT 10 BLOCK 45 CAD 2	0.16	0.24	11.02	0.011%
LARA GARCIA, MARIA D.	0927434009	27-91-26	N 60' OF LOTS 11 & 12 BLOCK 45 CAD 2ND	0.14	0.21	9.65	0.010%
SHOLLY, BRUCE R., 1/5 INT & SHOLLY, MAUREEN A., 1/5 INT & SHADONIX, DENISE M., 1/5 INT & NIEDERHAUSER, MELISSA J., 1/5 INT & SHOLLY, KEVIN F., 1/5 INT	0927434010	27-91-26	S 80' OF LOTS 11 & 12 BLOCK 45 CAD 2ND	0.18	0.27	12.24	0.012%
WILLARD, MICHAEL	0927435001	27-91-26	LOT 6 & W 5' OF LOT 5 BLOCK 46 CAD 2ND	0.18	0.26	11.66	0.012%
WILLARD LE, KATHY D. REM: WILLARD, ASHLEY 1/2 INT & WILLARD, STEVEN, 1/2 INT	0927435002	27-91-26	E 45' OF LOT 5 BLOCK 46 CAD 2ND	0.15	0.22	9.76	0.010%
C & C PROPERTY, LLC	0927435003	27-91-26	LOT 4 BLOCK 46 CAD 2	0.16	0.23	10.40	0.010%
MOSHER, JACK	0927435004	27-91-26	LOT 3 BLOCK 46 CAD 2	0.16	0.23	10.42	0.010%
DEAN, KELLY	0927435005	27-91-26	LOT 2 BLOCK 46 CAD 2	0.16	0.23	10.38	0.010%
KENNEDY, JENNIFER A. KENNEDY, JENNIFER	0927435006	27-91-26	LOT 1 BLOCK 46 CAD 2	0.16	0.23	10.43	0.010%
CAHALAN INVESTMENTS, LLC	0927435007	27-91-26	N 1/2 OF LOTS 7-8 & N 1/2 OF W 15' OF LOT 9 BLOCK 46 CAD 2ND	0.19	0.27	12.26	0.012%
POWERS, DAVID & CYNTHIA S., JTRS	0927435008	27-91-26	S 1/2 OF 7 & 8 & 9 BLOCK 46 CAD 2ND	0.24	0.35	15.66	0.016%
GUSTAFSON, CLARAJO	0927435009	27-91-26	E 35' OF N 1/2 OF LOT 9 BLOCK 46 CADWELLS 2ND	0.06	0.09	3.87	0.004%
SCHULTZ, CORY & SCHULTZ, CASSIE M., JTRS	0927435010	27-91-26	LOT 10 BLOCK 46 CAD 2ND	0.16	0.23	10.37	0.010%
FRAKES, JUDY ANN, LE REM: HEBERT, BRENDA ANN, 1/3 INT & JERGENS, LYNETTE MARIE, 1/3 INT & FRAKES, JENNIFER KAY, 1/3 INT	0927435011	27-91-26	N 70' OF LOTS 11 & 12 BLOCK 46 CAD 2ND	0.16	0.23	10.45	0.010%
CHERRY, JAMES, III	0927435012	27-91-26	S 70' OF LOTS 11 & 12 BLOCK 46 CAD 2ND	0.16	0.23	10.58	0.011%
CHAPMAN, ARTHUR D.	0927436001	27-91-26	LOT 6 & W 10' OF LOT5 BLOCK 47 CAD-2ND	0.19	0.31	14.04	0.014%
MMDUKE, LLC	0927436003	27-91-26	LOT 3 BLOCK 47 CAD 2	0.16	0.29	13.08	0.013%
COOPER, PHYLLIS, LE REM: WILSON, CONSTANCE A., 1/3 INT & COOPER, JOSEPH G., 1/3 INT & COOPER, LESLIE A., 1/9 INT & COOPER, TRENTON C. & MARCI, JTRS, 1/9 INT & LEGVOLD, KATHRYN J. & BRETT D., JTRS, 1/9 INT	0927436004	27-91-26	LOT 2 BLOCK 47 CAD 2	0.16	0.29	13.08	0.013%
MATTHES, KEITH E. & MATTHES, MONICA E., JTRS	0927436005	27-91-26	LOT 1 BLOCK 47 CAD 2	0.16	0.29	13.08	0.013%
REYNA, CHRISTOPHER C. & REYNA, DENISE L., JTRS	0927436006	27-91-26	LOT 7 & W 1/2 OF LOT8 BLOCK 47 CAD 2ND	0.24	0.35	15.93	0.016%
DEAKMAN, JENENE C.	0927436007	27-91-26	LOT 9 & E 1/2 OF LOT8 BLOCK 47 CAD 2ND	0.24	0.35	15.93	0.016%
GONZALEZ, LEONARDO & GONZALEZ, MIRIAM, JTRS	0927436008	27-91-26	LOT 10 BLOCK 47 CAD 2	0.16	0.23	10.62	0.011%
EGER, CHRISTINE	0927436009	27-91-26	LOT 11 BLOCK 47 CAD 2	0.16	0.27	12.13	0.012%
KAISER PROPERTIES II, LLC	0927436010	27-91-26	LOT 12 BLOCK 47 CAD 2	0.16	0.29	13.10	0.013%
HENNIGAR, MICHEAL A. & KELLIE J., JTRS	0927436011	27-91-26	ALL OF LOT 4 AND LOT5 EXC W 10' BLOCK 47 CAD-2ND	0.29	0.52	23.50	0.024%
FOSTER, ANNA & STEIL, MICHAEL & STEIL, LOREN & STEIL, BRIAN, JTRS	0927437001	27-91-26	LOT 3 BLOCK 48 CAD 2	0.16	0.29	13.09	0.013%
THRONTVEIT, TREASA	0927437002	27-91-26	LOT 2 & W 15' OF LOT1 BLOCK 48 CAD 2ND	0.21	0.40	17.94	0.018%
HUTCHINSON, MARC F.	0927437003	27-91-26	E 35' OF LOT 1 & 33'ADJ SAME ON E BLOCK48 CAD 2ND	0.22	0.42	19.20	0.019%

DRAINAGE DISTRICT NO. 94  
 WRIGHT COUNTY, IOWA  
 2020



MAIN TILE ASSESSMENT SCHEDULE

LANDOWNER(S)	PIN	S-T-R	BENEFITED PARCEL	ACRES	CLASS (%)	ASSESSMENT UNITS	% SCHEDULE
<b>T91N R26W, EAGLE GROVE TOWNSHIP</b>							
POHLMAN, ALAN S. & TERI JO., JTRS	0927437004	27-91-26	LOT 4 & W 10' OF N 65' OF LOT 5 BLOCK 48 CAD 2	0.18	0.33	15.09	0.015%
C & C PROPERTY LLC	0927437005	27-91-26	W 30' OF LOT 6 & LOT 5 EXC W 10' OF N 65' BLOCK 48 CAD 2ND	0.24	0.37	16.71	0.017%
NESVOLD, CURTIS E. & PATRICIA I., JTRS	0927437006	27-91-26	E 20' OF LOT 6 & 33' ADJ SAME ON E BLOCK 48 CAD 2ND	0.17	0.33	15.01	0.015%
CITY OF EAGLE GROVE, IOWA	0927459002	27-91-26	LOTS 14-15-16 BLOCK 30 ORIG	0.48	0.64	29.07	0.029%
HELMKE, ALLAN D. & RITA M., JTRS	0927460001	27-91-26	N 130.8' OF LOTS 1-2-3-4 BLOCK 29 ORIG	0.60	0.96	43.29	0.043%
WELAND, MICHAEL	0927460002	27-91-26	S 100' OF LOTS 1-2-3-4 BLOCK 29 ORIG	0.46	0.73	32.94	0.033%
SACRED HEART CHURCH CORPORATION	0927476002	27-91-26	BLOCK 1 FITZ	2.07	3.19	144.47	0.144%
WILLARD, BREEANN	0927477001	27-91-26	W 100' OF N 90' OF BLOCK 4 FITZ	0.21	0.32	14.35	0.014%
OLSON, MICHELLE	0927477002	27-91-26	S 60' OF N 150' OF W 150' OF BLOCK 4 FITZ	0.21	0.32	14.59	0.015%
SHUTT, H. DEAN & LINDA J., JTRS	0927477003	27-91-26	W 180' OF S 150' OF BLOCK 4 EXC E 10' OF S 50' FITZ MAURICE	0.61	0.95	42.95	0.043%
ZIGRANG, ROBERT J. & ZIGRANG, LISA M., JTRS	0927477004	27-91-26	E 50' OF W 150' OF N 90' OF BLOCK 4 FITZ	0.10	0.15	6.64	0.007%
STUMPF, AYL A R.	0927477005	27-91-26	W 50' OF E 150' OF N 100' OF BLOCK 4 FITZ	0.12	0.18	7.97	0.008%
CAHALAN INVESTMENTS, LLC	0927477006	27-91-26	W 50' OF E 100' OF N 100' BLOCK 4 FITZ	0.12	0.18	7.97	0.008%
GEISINGER, GARY L. & SHARON L.	0927477007	27-91-26	E 50' OF N 100' OF BLOCK 4 FITZ	0.12	0.18	7.97	0.008%
POHLMAN, MACKENZIE R.	0927477008	27-91-26	N 50' OF S 150' OF E 120' & S 50' OF N 150' OF E 150' OF BLOCK 4 FITZ	0.31	0.45	20.58	0.021%
JAKAMA HOLDINGS, LLC	0927477009	27-91-26	N 50' OF S 100' OF E 120' OF BLOCK 4 FITZ	0.14	0.21	9.36	0.009%
FARRELL, JAMES D. & KAREN R., JTRS	0927477010	27-91-26	S 50' OF E 130' OF BLOCK 4 FITZ	0.15	0.23	10.30	0.010%
ROTARY CLUB OF EAGLE GROVE HOME, INC.	0927478001	27-91-26	LOTS 5 & 6 BLOCK 7 FITZ	0.32	0.47	21.24	0.021%
CIRKSENA, PAULETTE	0927478002	27-91-26	LOTS 3 & 4 BLOCK 7 FITZ	0.32	0.49	21.95	0.022%
ALLEN, ROBERTA	0927478003	27-91-26	LOTS 1 & 2 BLOCK 7 FITZ	0.32	0.57	25.65	0.026%
CHASE, RACHELLE R.	0927478004	27-91-26	LOTS 7-8 BLOCK 7 FITZ	0.32	0.57	25.64	0.026%
RUSSELL, MARYBETH J.	0927478005	27-91-26	LOT 9 BLOCK 7 FITZ	0.16	0.31	14.17	0.014%
MEYER, JAMES A.	0927478006	27-91-26	LOT 10 BLOCK 7 FITZ	0.16	0.32	14.29	0.014%
MEYER, JAMES A.	0927478007	27-91-26	LOT 11 BLOCK 7 FITZ	0.16	0.32	14.34	0.014%
MEYER, JAMES A.	0927478008	27-91-26	LOT 12 BLOCK 7 FITZ	0.16	0.31	14.23	0.014%
CABRERA, JOSE A., JR.	0927479001		LOT 3 & W 35' OF LOT 2 BLOCK 10 FITZ	0.27	0.53	24.17	0.024%
NESVOLD-WILKINSON, JENNIFER	0927479002	27-91-26	vin #3KT4724C3N227806 Title No. 99AA61910 LOT 1 & E 15' OF LOT 2 BLOCK 10 FITZ	0.30	0.61	27.44	0.027%
GLASS, JACKIE K.	0927479003	27-91-26	LOTS 4 & 5 BLOCK 10 FITZ	0.32	0.65	29.35	0.029%
WHIPPLE, ZACHARY D.	0927479004	27-91-26	LOT 6 BLOCK 10 FITZ	0.24	0.49	22.09	0.022%
AMONSON, KYLE & AMONSON, GWENDOLYN, JTRS	0927480001	27-91-26	LOT 6 & W 1/2 OF LOT 5 BLOCK 2 FITZ	0.24	0.39	17.74	0.018%
SWALIN, TODD L.	0927480004	27-91-26	LOT 2 & LOT 3 EXC W 15' BLOCK 2 FITZ	0.27	0.44	19.82	0.020%
HARKEMA, JOHN C. & MARY T., JTRS	0927480005	27-91-26	LOT 1 BLOCK 2 FITZ	0.16	0.26	11.74	0.012%
GARCIA, SANDRA SOSA	0927480006	27-91-26	N 50' OF LOTS 11-12 BLOCK 2 FITZ MILIT - 00	0.12	0.20	8.86	0.009%
D AND R LLC	0927480007	27-91-26	LOTS 7 & 8 BLOCK 2 FITZ	0.32	0.52	23.71	0.024%

# DRAINAGE DISTRICT NO. 94

WRIGHT COUNTY, IOWA

2020

## MAIN TILE ASSESSMENT SCHEDULE



LANDOWNER(S)	PIN	S-T-R	BENEFITED PARCEL	ACRES	CLASS (%)	ASSESSMENT UNITS	% SCHEDULE
<b>T91N R26W, EAGLE GROVE TOWNSHIP</b>							
SORENSEN, MARK S.	0927480008	27-91-26	LOT 9 BLOCK 2 FITZ	0.16	0.26	11.82	0.012%
AINGER FAMILY TRUST, LESLIE & AINGER FAMILY TRUST, BARBARA FESKE, KEVIN E.	0927480009	27-91-26	LOT 10 BLOCK 2 FITZ	0.16	0.26	11.81	0.012%
	0927480010	27-91-26	S 90' OF LOTS 11-12 BLOCK 2 FITZ	0.21	0.34	15.46	0.015%
			W 15' OF LOT 3 & LOT 4 & E 1/2 OF LOT 5 BLOCK 2 FITZ	0.29	0.48	21.51	0.022%
SADLER, LARRY D. & SADLER, MARILYN, JTRS	0927480011	27-91-26	W 80' OF LOT 5 BLOCK 5 FITZ	0.18	0.29	13.31	0.013%
LEADLEY, ALAN D. & LEADLEY, ANN M., JTRS	0927481001	27-91-26	W 80' OF LOT 5 BLOCK 5 FITZ	0.14	0.23	10.18	0.010%
WADLE REVOCABLE TRUST, CLARK V., INT & WADLE REVOCABLE TRUST, PATRICIA A., INT	0927481002	27-91-26	E 60' OF W 140' OF LOT 5 BLOCK 5 FITZ	0.14	0.22	10.03	0.010%
BANWELL, LEIGH F. & BANWELL, SHERRY J., JTRS	0927481003	27-91-26	E 60' OF LOT 5 BLOCK 5 FITZ	0.46	0.75	33.85	0.034%
RISTAU FAMILY TRUST, WILLARD W. & RISTAU FAMILY TRUST, CAROLE A. CHRISTENSEN, KELSY J.	0927481004	27-91-26	LOT 4 BLOCK 5 FITZ	0.46	0.79	35.68	0.036%
	0927481005	27-91-26	LOT 3 BLOCK 5 FITZ	0.17	0.29	13.23	0.013%
SPANGLER, KIM L. & PAMELA K., JTRS	0927481006	27-91-26	LOT 1 EXC S 1/2 BLOCK 5 FITZ	0.17	0.30	13.71	0.014%
PEDERSON, AMY M.	0927481007	27-91-26	S 1/2 OF LOT 1 BLOCK 5 FITZ	0.16	0.28	12.87	0.013%
BOSTEDER, BLANCHE M. & OLIPHANT, KATHERINE L., JTRS	0927481008	27-91-26	N 70' OF LOT 2 BLOCK5 FITZ	0.18	0.33	15.03	0.015%
BANWELL, LEIGH F. & SHERRY, JTRS	0927481009	27-91-26	S 80' OF LOT 2 BLOCK 5 FITZ	0.16	0.32	14.36	0.014%
RYAN, JOSEPH G., LE REM: RYAN, DANIEL J.	0927482001	27-91-26	LOT 6 BLOCK 8 FITZ	0.16	0.32	14.55	0.015%
MMDUKE, LLC	0927482002	27-91-26	LOT 5 BLOCK 8 FITZ	0.32	0.64	29.11	0.029%
KAUFFMAN, JOHN E.	0927482003	27-91-26	LOTS 3 & 4 BLOCK 8 FITZ	0.32	0.52	23.64	0.024%
KAUFFMAN, JOHN ERNEST & KAUFFMAN, JODIE DAWN, JTRS	0927482004	27-91-26	LOTS 1 & 2 BLOCK 8 FITZ	0.19	0.38	17.23	0.017%
ROTARY CLUB OF EAGLE GROVE HOME INC.	0927482005	27-91-26	N 1/2 OF LOTS 7 & 8 & N 1/2 OF W 15' OF LOT 9 BLOCK 8 FITZ	0.19	0.38	17.08	0.017%
ROTARY CLUB OF EAGLE GROVE HOME INC.	0927482006	27-91-26	S 1/2 OF LOTS 7 & 8 & S 1/2 OF W 15' OF LOT 9 BLOCK 8 FITZ	0.05	0.10	4.54	0.005%
KLEEN, THERESA A.	0927482007	27-91-26	E 15' OF W 30' OF LOT 9 BLOCK 8 FITZ	0.27	0.54	24.53	0.025%
KLEEN, THERESA A.	0927482008	27-91-26	E 20' OF LOT 9, LOT 10 & W 15' OF LOT 11 BLOCK 8 FITZ	0.27	0.47	21.29	0.021%
KLEEN, THERESA A.	0927482009	27-91-26	E 35' OF LOT 11 & 12 BLOCK 8 FITZ	0.56	1.32	59.51	0.060%
MOSS, DUANE	0927483002	27-91-26	LOTS 1, 2, & 3 BLOCK 11 FITZ	0.62	1.57	71.15	0.071%
MOSS, DUANE	0927483003	27-91-26	LOTS 4, 5, 6, & ALLEY BLOCK 11 FITZ	0.20	0.33	15.09	0.015%
BOSTEDER, BLANCHE M. & RIPPERGER, MATTHEW A., JTRS	0927484001	27-91-26	N 1/2 OF LOTS 5 & 6 & E 25' OF S 70' OF LOT 5 BLOCK 3 FITZ	0.08	0.13	6.05	0.006%
LAWRENCE, KEVIN & LAWRENCE, TINA, JTRS	0927484002	27-91-26	LOT 4 BLOCK 3 FITZ	0.16	0.28	12.45	0.012%
WATTS, MR. & MRS DARYL R.	0927484003	27-91-26	LOT 3 BLOCK 3 FITZ	0.06	0.10	4.56	0.005%
ZIGRANG, ROBERT J. & ZIGRANG, LISA M., JTRS	0927484006	27-91-26	N 35' OF S 70' OF LOT 6 & N 35' OF S 70' OF W 25' OF LOT 5 BLOCK 3 FITZ	0.06	0.10	4.56	0.005%
BANWELL, LEIGH F. & SHERRY, JTRS	0927484007	27-91-26	S 35' OF LOT 6 & S 35' OF W 1/2 OF LOT 5 BLOCK 3 FITZ	0.16	0.27	12.15	0.012%
ACOSTA, SALVADOR GUIDO	0927484008	27-91-26	LOT 7 BLOCK 3 FITZ	0.24	0.42	19.16	0.019%
FOSTER, RODNEY S. & ANNA L., JTRS	0927484009	27-91-26	LOT 8 & W 1/2 OF LOT9 BLOCK 3 FITZ	0.24	0.44	19.85	0.020%
WATTS, DARYL	0927484010	27-91-26	LOT 10 & E 1/2 OF LOT 9 BLOCK 3 FITZ	0.32	0.58	26.38	0.026%
LUKES, GEOFFREY J. & LUKES, BETH A., JTRS	0927484011	27-91-26	LOTS 11 & 12 BLOCK 3 FITZ	0.32	0.56	25.43	0.025%
LOCKE, WILLARD C. & LOCKE, MAUREEN K., JTRS	0927484012	27-91-26	LOTS 1 & 2 BLOCK 3 FITZ	0.34	0.62	28.16	0.028%
DAY, TIMOTHY A.	0927485001	27-91-26	LOTS 5-6 & 1/2 OF ALLEY LY S OF SAME BLOCK 6 FITZ	0.34	0.64	29.13	0.029%
BABCOCK, JOEL I.& BABCOCK, NICOLE M., JTRS	0927485002	27-91-26	LOTS 3-4 & 1/2 OF ALLEY LY S OF SAME BLOCK 6 FITZ	0.32	0.61	27.45	0.027%
PINKELE, ANDREW L.	0927485003	27-91-26	LOTS 1-2 BLOCK 6 FITZ	0.24	0.45	20.46	0.020%
ANDERSON, DAVID M. & ANDERSON, MIRANDA J., JTRS	0927485004	27-91-26	N 60' OF LOTS 7-8-9 & 1/2 ALLEY ADJ SAMEON N BLOCK 6 FITZ				

# DRAINAGE DISTRICT NO. 94

WRIGHT COUNTY, IOWA

2020

## MAIN TILE ASSESSMENT SCHEDULE



LANDOWNER(S)	PIN	S-T-R	BENEFITED PARCEL	ACRES	CLASS (%)	ASSESSMENT UNITS	% SCHEDULE
<b>T91N R26W, EAGLE GROVE TOWNSHIP</b>							
MMDUKE, LLC	0927485005	27-91-26	S 40' OF N 100' OF LOTS 7, 8 & 9 BLOCK6 FITZ	0.14	0.27	12.00	0.012%
AINGER FAMILY TRUST, LESLIE & AINGER FAMILY TRUST, BARBARA	0927485006	27-91-26	S 40' OF LOTS 7, 8 &S 40' OF W 40' OF LOT 9 BLOCK 6 FITZ	0.13	0.25	11.21	0.011%
AINGER FAMILY TRUST, LESLIE & AINGER FAMILY TRUST, BARBARA	0927485007	27-91-26	E 10' OF S 40' OF LOT 9 BLOCK 6 FITZ	0.01	0.02	0.98	0.001%
PINKELE, ANDREW L.	0927485008	27-91-26	LOTS 10-11-12 BLOCK 6 FITZ	0.48	0.92	41.42	0.041%
GONZALES, BRIAN UZIEL	0927486001	27-91-26	LOT 6 BLOCK 9 FITZ	0.16	0.38	17.10	0.017%
BANWELL, LEIGH F. & BANWELL, SHERRY J., JTRS	0927486002	27-91-26	LOT 5 BLOCK 9 FITZ	0.16	0.45	20.44	0.020%
BANWELL, LEIGH F. & SHERILYN J., JTRS	0927486003	27-91-26	LOT 4 BLOCK 9 FITZ	0.16	0.48	21.86	0.022%
EAGLE BUILDING SUPPLY, INC.	0927486004	27-91-26	LOTS 1-2-3-7-8-9-10-11-12 BLOCK 9 FITZ	1.45	3.41	154.40	0.154%
ROOSA, LARRY E. & CYNTHIA L., JTRS	0927487002	27-91-26	S 82' OF W 148' OF TR W OF OUTLOT A FITZ	0.28	0.75	34.15	0.034%
JAKAMA HOLDINGS, LLC	0927487003	27-91-26	E 64' OF W 148' OF N150' OF TR LY W OF OUTLOT A FITZ	0.22	0.41	18.66	0.019%
MARVETS, DUSTIN & REISNER, KALA, JTRS	0927487004	27-91-26	E50 OF N150 OF TR W OF OUTLOT A SE SE 27-91-26 & S82OF E 50 ADJ ON S FITZ	0.27	0.41	18.68	0.019%
EAGLE GROVE SERVICE CENTER, INC.	0927487005	27-91-26	OUTLOT A FITZ	0.57	0.85	38.49	0.038%
SCHULTZ, KATHERINE M.	0927487006	27-91-26	W 84' OF N 150' OF TR LY W OF OUTLOT A EXC S 10' FITZ	0.27	0.48	21.85	0.022%
ROOSA, LARRY E. & CYNTHIA L.	0927487007	27-91-26	S 10' OF W 84' OF N 150' OF TR LY W OF OUTLOT A FITZ	0.02	0.05	2.39	0.002%
EAGLE GROVE IOWA, CITY OF	0927488001	27-91-26	W 90' OF LOTS 7 & 8 BLOCK 15 FITZ	0.21	0.41	18.70	0.019%
BOSTEDER, BLANCHE & RIPPERGER, DEBRA & BOSTEDER, ALAN, JTRS	0927488002	27-91-26	W 90' OF LOTS 5 & 6 BLOCK 15 FITZ	0.22	0.46	20.87	0.021%
BOSTEDER, BLANCHE M. & BOSTEDER, ALAN D., JTRS	0927488003	27-91-26	E 50' OF LOTS 5-6-7-8 & W 1/2 OF ALLEY ADJ SAME ON EAST BLOCK 15 FITZ	0.29	0.61	27.45	0.027%
BOSTEDER, ALAN	0927488004	27-91-26	LOTS 1 & 2 & E 1/2 OF ALLEY ADJ SAME BLOCK 15 FITZ	0.34	0.79	35.79	0.036%
BOSTEDER, BLANCHE & RIPPERGER, DEBRA & BOSTEDER, ALAN, JTRS	0927488005	27-91-26	LOT 3 & E 1/2 OF ALLEY ADJ SAME BLOCK 15 FITZ	0.17	0.35	16.02	0.016%
BOSTEDER, BLANCHE & RIPPERGER, DEBRA & BOSTEDER, ALAN, JTRS	0927488006	27-91-26	E 1/2 OF ALLEY LY BETWEEN LOTS 4 & 5 &LOT 4 BLOCK 15 FITZ	0.20	0.36	16.50	0.017%
KIST, TERRY	0927489001	27-91-26	W 1/2 OF ALLEY & LOTS 7 & 8 BLOCK 14 FITZ	0.34	0.70	31.58	0.032%
JOHNSTON, THOMAS R. & BARBARA J., JTRS	0927489002	27-91-26	E 1/2 OF ALLEY & LOTS 1 & 2 BLOCK 14 FITZ	0.34	0.66	30.02	0.030%
JENSEN, SCOTT A. & JENSEN, KELLY A., JTRS	0927489003	27-91-26	W 100' OF LOTS 5 & 6 BLOCK 14 FITZ	0.25	0.47	21.05	0.021%
ROSENDAHL, TRICIA LEE	0927489004	27-91-26	W 40' OF LOTS 3 & 4,E 40' OF LOTS 5 & 6 & ALLEY BETWEEN BLOCK 14 FITZ	0.25	0.46	20.62	0.021%
READ, DENNIS W.	0927489005	27-91-26	E 100' OF 3 & 4 BLOCK 14 FITZ	0.25	0.47	21.21	0.021%
ROTARY CLUB OF EAGLE GROVE HOME, INC.	0927490001	27-91-26	BLOCK 12 & BLOCK 13 & STREET & ALLEY LY BETWEEN	2.23	6.33	286.44	0.286%
CHICAGO & NORTHWESTERN RAILROAD COMPANY % UNION PACIFIC RAILROA	0927501002	27-91-26	BAL RR NE 1/4 27-91-26	4.00	6.76	305.97	0.306%
UNION PACIFIC RAILROAD COMPANY	0927501003	27-91-26	E 1/2 OF LOT 1 BLOCKA WRI 1ST	0.08	0.11	4.91	0.005%
CHICAGO & NORTHWESTERN RAILROAD COMPANY % UNION PACIFIC RAILROA	0927501006	27-91-26	ALL OF BLOCK 10 COX 2ND	0.82	1.03	46.54	0.047%
C. G. W. RR, CO.	0927501007	27-91-26	LOTS 4-5-6-7-8 BLOCK 9 COX	0.41	0.44	19.69	0.020%
CHICAGO & NORTHWESTERN RAILROAD COMPANY % UNION PACIFIC RAILROA	0927501013	27-91-26	LOT 1 & E 20' OF LOT2 BLOCK 32 ORIG	0.22	0.28	12.71	0.013%

DRAINAGE DISTRICT NO. 94  
 WRIGHT COUNTY, IOWA  
 2020



MAIN TILE ASSESSMENT SCHEDULE

LANDOWNER(S)	PIN	S-T-R	BENEFITED PARCEL	ACRES	CLASS (%)	ASSESSMENT UNITS	% SCHEDULE
<b>T91N R26W, EAGLE GROVE TOWNSHIP</b>							
C. G. W. RR, CO.	0927501014	27-91-26	LOT 20 & TH PT OF LOT 19 LY E OF RR BLOCK 32 ORIG	0.22	0.28	12.73	0.013%
C. G. W. RR, CO.	0927501015	27-91-26	LOT 1 & TH PT OF LOT 2 LY E OF RR BLOCK 31 ORIG	0.16	0.21	9.64	0.010%
C. G. W. RR, CO.	0927501016	27-91-26	LOT 18 & LOT 17 EXC TH PT BY W OF RR BLOCK 31 ORIG	0.31	0.42	18.77	0.019%
CADWELL, PHINNEAS	0927501017	27-91-26	LOTS 1-2-3 BLOCK 30 ORIG	0.48	0.64	29.07	0.029%
C. G. W. RR, CO.	0927501018	27-91-26	LOTS 5 - 6 - & 7 BLOCK 29 ORIG	0.83	0.99	44.87	0.045%
LUND, AMY JO & ASKVG, JOSEPH LEE, JTRS	0934178001	34-91-26	LOT 16 NE NW 34-91-26	0.85	1.29	58.48	0.058%
PADILLA, LISA M.	0934178002	34-91-26	LOT 17 NE NW 34-91-26	0.55	0.50	22.71	0.023%
MURPHY, BRANDON E. & MURPHY, KIMBERLY, JTRS	0934178003	34-91-26	LOTS 18 & 19 NE NW 34-91-26	2.39	2.61	118.08	0.118%
MURPHY, BRANDON E. & MURPHY, KIMBERLY, JTRS	0934178004	34-91-26	N 15' OF LOTS 2 & 3 BLOCK 1 MIDDLETON	0.10	0.03	1.54	0.002%
THOMASON, GEORGE & SANDRA M., JTRS	0934178008	34-91-26	W 42' OF LOT 5 BLOCK 1 MIDDLETON	0.15	0.09	4.09	0.004%
THOMASON, GEORGE & SANDRA M., JTRS	0934178009	34-91-26	LOT 6 & E 8' OF LOT 5 BLOCK 1 MIDDLETON	0.20	0.21	9.35	0.009%
LOUX, TERRY A.	0934178011	34-91-26	LOT 7 & THE W 30' OF LOT 8 BLOCK 1 MIDDLETON	0.28	0.30	13.78	0.014%
AXTELL, TONY L. & DENISE T., JTRS	0934178012	34-91-26	LOT 1 & THE E 20' OF LOT 8 BLOCK 1 MIDDLETON	0.76	0.80	36.27	0.036%
LYLE'S FORD MERCURY, LLC	0934178015	34-91-26	LOTS 2 & 3 EXC N 15' & A TR IN LOT 4 BLK 1 MIDDLETON	1.30	0.55	24.99	0.025%
WILDE, CLARENCE F., LE & WILDE, BETTY L., LE REM: WILDE, CHAD F. & WILDE, ANN M., JTRS	0934180003	34-91-26	LOTS 1, 2, 3, & 4 & ALLEY LY ON W BLK 2 & LOTS 1-2-3-4 EXC E40' & ST LY ON W B A 34-91-26	1.68	1.45	65.41	0.065%
GRACE EVANGELICAL FREE CHURCH OF EAGLE GROVE, IOWA	0934181003	34-91-26	S 285' OF A TR IN SENW LY S OF MIDD ADD & E OF HWY 34-91-26	2.71	1.59	71.93	0.072%
PETERSON, CHRISTOPHER L.	0934181004	34-91-26	PARCEL H IN SE NW OUTLOTS 34-91-26	0.77	0.26	11.77	0.012%
HOVLAND, DALE R.	0934181006	34-91-26	PARCEL J IN SE NW OUTLOTS 34-91-26	1.10	0.32	14.44	0.014%
HANSEN, ARIEL	0934203001	34-91-26	LOT 1 BLOCK 7 SHP	0.50	0.93	41.88	0.042%
WALKER, PAM	0934203002	34-91-26	LOT 2 & N 6' OF LOT 3 BLOCK 7 SCOTT'S HIGHLAND PARK	0.53	1.29	58.53	0.059%
PIECZKO, ANTHONY & SHAWN, JTRS	0934203003	34-91-26	LOT 4 & S 69' OF LOT 3 BLOCK 7 SHP	0.96	1.78	80.56	0.081%
PIECZKO, ANTHONY & SHAWN, JTRS	0934203004	34-91-26	LOT 5 BLOCK 7 SHP	0.50	0.80	36.06	0.036%
PIECZKO, ANTHONY & SHAWN, JTRS	0934203005	34-91-26	LOT 6 & N 33' OF LOT 7 BLOCK 7 SHP	0.71	1.26	57.19	0.057%
O'HERN, DANIEL J. & DIANE M., JTRS	0934203006	34-91-26	N 35' OF LOT 8 & S 43' OF LOT 7 BLOCK 7 SHP	0.48	0.81	36.69	0.037%
JONES, MARK E. & BARBARA J., JTRS	0934203007	34-91-26	S 51' OF LOT 8 & N 24' OF LOT 9 BLOCK 7 SHP	0.40	0.67	30.29	0.030%
WILSON, MARK A. & BETH A., JTRS	0934203008	34-91-26	S 75' OF LOT 9 BLOCK 7 SHP	0.35	0.56	25.29	0.025%
ELBERG, MARIA R.	0934203009	34-91-26	N 100' OF LOT 10 BLOCK 7 SHP	0.37	0.59	26.66	0.027%
THOMAS, GARY EDWARD & LAURA JO, JTRS	0934203010	34-91-26	N 50' OF LOT 11 & S 37' OF LOT 10 BLOCK 7 SHP	0.23	0.37	16.57	0.017%
THOMAS, GARY E. & LAURA J., JTRS	0934203011	34-91-26	S 191' OF LOT 11 BLOCK 7 SHP	0.11	0.18	7.93	0.008%
REMIGER, JANET L.	0934204001	34-91-26	OUTLOT 1 EXC S 22' WRIGHTS SOUTH	0.66	0.57	25.57	0.026%
REMIGER, JANET L.	0934204002	34-91-26	OUTLOT 2 & S 22' OF LOT 1 WRI SOUTH	1.24	1.32	59.74	0.060%
ZUSPANN, LOREN R. & ZUSPANN, JACQUELINE M., JTRS	0934204003	34-91-26	OUTLOT 3 WRI SOUTH	1.08	1.06	47.97	0.048%
MACDONALD, JERALD P.	0934204004	34-91-26	OUTLOT 4 WRI S	6.20	5.81	262.63	0.263%
LARSON, JAMES A. & LARSON, CHRISTINA L., JTRS	0934205001	34-91-26	OUTLOT 6 WRI S	0.92	1.42	64.34	0.064%
LEHMAN, H. JEAN	0934205002	34-91-26	OUTLOT 7 WRIGHT'S SOUTH	0.96	1.31	59.44	0.059%

DRAINAGE DISTRICT NO. 94  
 WRIGHT COUNTY, IOWA  
 2020



MAIN TILE ASSESSMENT SCHEDULE

LANDOWNER(S)	PIN	S-T-R	BENEFITED PARCEL	ACRES	CLASS (%)	ASSESSMENT UNITS	% SCHEDULE
<b>T91N R26W, EAGLE GROVE TOWNSHIP</b>							
LEHMAN, H. JEAN	0934205003	34-91-26	OUTLOT 8 WRIGHT'S SOUTH	1.00	1.28	57.77	0.058%
LEHMAN, H. JEAN	0934205004	34-91-26	OL 9 & STR ADJ ON S & N 57' OF OL 10 WR S & N 57' OF E 1/2 OL 1 SW NE 34-91-26	5.55	5.60	253.28	0.253%
RETHMAN, RICHARD D. & RETHMAN, SHELLY A., JTRS	0934226001	34-91-26	LOT 6 NE NE 34-91-26	0.15	0.30	13.74	0.014%
RETHMAN, RICHARD D. & RETHMAN, SHELLY A., JTRS	0934226002	34-91-26	W 8' OF ALLEY & LOT 1 BLOCK 6 SCOTT'S HIGHLAND PARK	0.17	0.33	14.93	0.015%
RETHMAN, RICHARD D. & RETHMAN, SHELLY A., JTRS	0934226003	34-91-26	W 8' OF ALLEY & LOT 2 BLOCK 6 SCOTT'S HIGHLAND PARK	0.17	0.30	13.77	0.014%
RETHMAN, RICHARD D. & RETHMAN, SHELLY A., JTRS	0934226004	34-91-26	LOT 3 & W 8' OF ALLEY ADJ BLOCK 6 SCOTT'S HIGHLAND PRK	0.17	0.28	12.46	0.012%
BANWELL, LEIGH F. & SHERRY J., JTRS	0934226005	34-91-26	W 75' OF 4-5-6 BLOCK6 SHP	0.26	0.44	19.77	0.020%
MADSON, STANLEY W. & DONNA L., JTRS	0934226006	34-91-26	W 1/2 OF ALLEY & E 67' OF 4, 5 & 6 BLOCK 6 SHP	0.26	0.42	19.13	0.019%
RETHMAN, SHELLEY	0934226007	34-91-26	LOT 5 NE NE 34-91-26	0.15	0.21	9.46	0.009%
RETHMAN, SHELLEY	0934226008	34-91-26	LOTS 11 & 12 & 1/2 OF ALLEY ADJ SAME ONW BLOCK 6 SCOTT'S HIGHLAND PARK	0.34	0.55	25.03	0.025%
RETHMAN, RICHARD D. & SHELLEY A., JTRS	0934226009	34-91-26	N 40' OF LOT 9 & LOT 10 & E 1/2 OF ALLEY ADJ ON WEST BLOCK 6 SHP	0.31	0.41	18.54	0.019%
WILLARD, KATHLEEN	0934226010	34-91-26	LOT 9 EXC N 40' & E 1/2 OF ALLEY ADJ ON W BLOCK 6 SHP	0.03	0.05	2.21	0.002%
SCHMANKE, KATHLEEN K.	0934226011	34-91-26	LOT 8 & W 12' OF 7 & E 8' OF ALLEY BLOCK 6 SHP	0.20	0.33	14.85	0.015%
MEYER, LARRY W.	0934226012	34-91-26	E 130' OF LOT 7 BLOCK 6 SHP	0.15	0.25	11.23	0.011%
WESSELINK, JOHN C. & SUSAN K., JTRS	0934227003	34-91-26	W 75' OF 3, W 79' OFLOT 4 & N 1/2 OF 5 EXC E 63' BL 5 SHP SHP	0.22	0.36	16.09	0.016%
MOHR, THOMAS W.	0934227004	34-91-26	W 79' OF LOT 6 & S 1/2 OF 5 EXC E 63' BLOCK 5 SHP	0.14	0.23	10.23	0.010%
HOANG, SAM A. & HOANG, CINDY, JTRS	0934227006	34-91-26	E 63' OF LOT 4 & E 63' OF N 1/2 OF LOT 5 & ALL OF ALLEY LY ON E BLOCK 5 SHP	0.14	0.23	10.26	0.010%
ZIGRANG, ROBERT J. & ZIGRANG, LISA M., JTRS	0934227007	34-91-26	E 63' OF LOT 6 & E 63' OF S 1/2 OF LOT 5 & W 1/2 OF ALLEY LY ONE BLOCK 5 SHP	0.12	0.19	8.75	0.009%
STUCKEY, BILLIE M. & WELAND, MITCHELL S., JTRS	0934227008	34-91-26	E 1/2 OF ALLEY LY W OF LOT 7 & S 1/2 OF 8 BLOCK 5 SHP	0.01	0.02	0.73	0.001%
BANWELL, LEIGH F. & SHERRY J., JTRS	0934227009	34-91-26	LOTS 10-11-12 & E 1/2 OF ALLEY ADJ SAME BLOCK 5 SHP	0.52	0.84	38.10	0.038%
ROHRER, GREGORY L. & SUZANNE K., JTRS	0934227010	34-91-26	LOT 9 & N 1/2 OF LOT8 BLOCK 5 SCOTT'S HIGHLAND PARK	0.25	0.40	18.31	0.018%
STUCKEY, BILLIE M. & WELAND, MITCHELL S., JTRS	0934227011	34-91-26	LOT 7 & S 1/2 OF LOT8 BLOCK 5 SCOTT'S HIGHLAND PARK	0.25	0.40	18.11	0.018%
ARNE, TERRY G. & ARNE, VICKY J., JTRS	0934227012	34-91-26	LOTS 1 & 2 & W 8' OFALLEY ADJ SAME ON E & E 67' OF LOT 3 & W 8' ADJ SAME ON E BLOCK 5 SHP	0.43	0.70	31.52	0.032%
ASCHERL, LUKE T. & AMY M., JTRS	0934228001	34-91-26	W 100' OF 1 & 2 BLOCK 4 SHP	0.23	0.36	16.20	0.016%
THOMAS, GARY EDWARD & THOMAS, LAURA JO, JTRS	0934228002	34-91-26	LOTS 3 & 4 & 1/2 OF ALLEY ADJ SAME ON E BLOCK 4 SHP	0.34	0.52	23.64	0.024%
SCHOO, DAVID LEE & SCHOO, LINDA RAE, JTRS	0934228003	34-91-26	LOTS 5 & 6 & W 1/2 OF ALLEY ADJ ON E BLK 4 SHP	0.34	0.50	22.64	0.023%
C&C PROPERTIES, LLC	0934228004	34-91-26	E 42' OF LOTS 1 & 2 W 2' OF LOTS 11 & 12& ALLEY BETWEEN BLOCK 4 SHP	0.14	0.21	9.66	0.010%
LOUX, AUSTIN N.	0934228005	34-91-26	LOTS 11 & 12 EXC W 2' BLOCK 4 SHP	0.32	0.46	20.90	0.021%
LOWE, ANDREW T. & WILLIAMS, VALERIE, JTRS	0934228006	34-91-26	LOT 10 & N 15' OF 9 & 1/2 OF ALLEY ADJ SAME ON W BLOCK 4 SHP	0.22	0.32	14.28	0.014%

DRAINAGE DISTRICT NO. 94  
 WRIGHT COUNTY, IOWA  
 2020



MAIN TILE ASSESSMENT SCHEDULE

LANDOWNER(S)	PIN	S-T-R	BENEFITED PARCEL	ACRES	CLASS (%)	ASSESSMENT UNITS	% SCHEDULE
<b>T91N R26W, EAGLE GROVE TOWNSHIP</b>							
LARICK, JOAN C.	0934228007	34-91-26	LOTS 7 & 8 & S 35' OF LOT 9 BLOCK 4 SHP	0.44	0.63	28.41	0.028%
BAKER, JOAN C.	0934228008	34-91-26	E 1/2 OF ALLEY ABUTT LOTS 7-8 & S 35' OF LOT 9 BK 4 SHP	0.03	0.04	1.93	0.002%
HASS, KRISTINE	0934229001	34-91-26	N 134' OF W 100' OF LOT 4 NE NE 34-91-26	0.31	0.53	23.87	0.024%
LOCKE, JUSTIN B. & LOCKE, TARA JO, JTRS	0934229002	34-91-26	E 95' OF N 160' EXC S 26' OF W 50' OF LOT 4 NE NE 34-91-26	0.32	0.54	24.58	0.025%
SADLER REVOCABLE TRUST, MARY J.	0934229005	34-91-26	E 214.5' OF W 429.5' OF S 132' OF LOT 1 NE NE 34-91-26.	0.65	1.07	48.44	0.048%
SADLER REVOCABLE TRUST, MARY J.	0934229006	34-91-26	16.5' STRIP LY W OF LOT 2 NE NE 34-91-26	0.07	0.12	5.34	0.005%
ROTARY CLUB OF EAGLE GROVE HOME, INC.	0934229009	34-91-26	LOT 1 EXC W 508.8' & EXC E 207.65' OF W 716.45' OF S 161.74' 34-91-26	4.14	7.16	323.79	0.324%
FORBES, RICHARD L.	0934229013	34-91-26	N 62' OF S 132' OF W 150' OF LOT 1 & S 8' OF W 150' OF LOT 4 NE NE 34-91-26	0.24	0.41	18.65	0.019%
FEELEY, MARY M. & BRAUMAN, LANCE PATRICK & BRAUMAN, SCOTT MICHAEL & BRAUMAN, CHAD TIMOTHY, JTRS	0934229014	34-91-26	S 70' OF W 150' OF LOT 1 NE NE 34-91-26	0.24	0.41	18.72	0.019%
MYERS, ELDON	0934229015	34-91-26	LOT 1 PRKVW	0.28	0.47	21.11	0.021%
SADLER, LARRY D. & MARILYN A., JTRS	0934229016	34-91-26	LOT 2 PRKVW	0.26	0.43	19.43	0.019%
SCHAFFER, AARON L. & SCHAFFER, SHONDA L., JTRS	0934229017	34-91-26	LOT 3 & W 13' OF LOT 4 PRKVW	0.29	0.46	20.86	0.021%
WELAND, JUDY, LE REM: WELAND, MICHAEL & WELAND, MITCHELL	0934229018	34-91-26	E 80' OF LOT 4 PRKVW	0.22	0.34	15.48	0.015%
THEDE, ERIC J.	0934229019	34-91-26	LOT 5 PRKVW	0.26	0.41	18.45	0.018%
WEBER, TERI D.	0934229020	34-91-26	LOT 6 PRKVW	0.26	0.40	18.31	0.018%
TORRES, JUAN A. & TORRES, SHEILA K., JTRS	0934229021	34-91-26	LOT 7 PRKVW	0.27	0.42	18.90	0.019%
WHITE, DAVID E. & WHITE, SUSAN K., JTRS	0934229022	34-91-26	LOT 8 PRKVW	0.29	0.44	20.01	0.020%
STEPHAS, EDWIN L. & STEPHAS, BETH E., JTRS	0934229023	34-91-26	LOT 9 & TRACT IN LOT 10 PRKVW	0.59	0.87	39.46	0.039%
SADLER CONSTRUCTION, INC.	0934229024	34-91-26	LOT 10 EXC TRACT PRKVW	0.24	0.33	14.83	0.015%
AINGER FAMILY TRUST, LESLIE & AINGER FAMILY TRUST, BARBARA	0934229025	34-91-26	LOT 11 PRKVW	0.28	0.37	16.83	0.017%
SADLER, TERESA MARY, LE REM: DAGGETT, MACKENZIE M.	0934229026	34-91-26	LOT 12 PRKVW	0.31	0.26	11.88	0.012%
JOHNSON, KENDALL L. & JOHNSON, LEEANN M., JTRS	0934229027	34-91-26	LOT 13 PRKVW	0.53	0.43	19.38	0.019%
SHUFFORD, EDDIE T.	0934229028	34-91-26	N 70' OF S 78' OF W 150' OF LOT 4 EXC E 5' NE NE 34-91-26	0.23	0.40	17.98	0.018%
SADLER REVOCABLE TRUST, MARY J.	0934229029	34-91-26	E 5' OF N 70' OF S 78' OF W 150' LOT 4 NE NE 34-91-26	0.01	0.02	0.79	0.001%
SADLER REVOCABLE TRUST, MARY J.	0934229031	34-91-26	E 5' OF N 64' OF S 142' OF W 150' OF LOT 4 NE NE 34-91-26	0.01	0.02	0.79	0.001%
SADLER REVOCABLE TRUST, MARY J.	0934229032	34-91-26	LOT 3A IN NE NE 34-91-26	0.40	0.68	30.91	0.031%
SADLER REVOCABLE TRUST, MARY J.	0934229033	34-91-26	16.5' STRIP LY W OF LOT 3C IN NE NE 34-91-26	0.08	0.13	6.04	0.006%
SADLER REVOCABLE TRUST, MARY J.	0934229034	34-91-26	LOT 3B IN NE NE 34-91-26	0.46	0.77	34.99	0.035%
SADLER REVOCABLE TRUST, MARY J.	0934229035	34-91-26	LOT 3C IN NE NE 34-91-26	0.46	0.77	34.72	0.035%
MAIER, BRANDON	0934229037	34-91-26	N 64' OF S 142' OF W 130' OF LOT 4 34-91-26	0.19	0.33	14.93	0.015%
SADLER REVOCABLE TRUST, MARY J.	0934229038	34-91-26	E 15' OF W 145' OF N 64' OF S 142' OF LOT 4 NE NE OUTLOT 34-91-26	0.02	0.03	1.57	0.002%
SADLER REVOCABLE TRUST, MARY J.	0934229039	34-91-26	N 90' OF LOT 2 NE NE 34-91-26	0.21	0.36	16.07	0.016%
SADLER REVOCABLE TRUST, MARY J.	0934229040	34-91-26	LOT 2 EXC N 90' NE NE 34-91-26	0.16	0.27	12.32	0.012%
MURPHY, TC L.	0934229041	34-91-26	N 100' OF S 242' OF W 150' OF LOT 4 NE NE 34-91-26	0.34	0.59	26.66	0.027%
VOSS, LEONARD F.	0934229042	34-91-26	PAR K IN LOT 4 NE NE 34-91-26	0.08	0.14	6.17	0.006%

DRAINAGE DISTRICT NO. 94  
 WRIGHT COUNTY, IOWA  
 2020



MAIN TILE ASSESSMENT SCHEDULE

LANDOWNER(S)	PIN	S-T-R	BENEFITED PARCEL	ACRES	CLASS (%)	ASSESSMENT UNITS	% SCHEDULE
<b>T91N R26W, EAGLE GROVE TOWNSHIP</b>							
SADLER REVOCABLE TRUST, MARY J.	0934229043		E 65' OF W 215' OF LOT 1 EXC A 45' X 50' TR & E 20' OF N 234' & E 65' OF S 142' OF LOT 4 NE NE 34-91-26	0.46	0.78	35.30	0.035%
SADLER, LARRY D. & SADLER, MARILYN A., JTRS	0934229044	34-91-26	A 45' X 50' TR IN LOT 1 NE NE 34-91-26	0.05	0.08	3.82	0.004%
ROTARY ANN APARTMENTS, INC.	0934229045	34-91-26	W 289.81' OF S 161.74' & W 79.3' OF N 347.3' OF LOT 1 NE NE EXC TR 1	1.50	2.46	111.42	0.111%
ROTARY CLUB OF EAGLE GROVE HOME, INC.	0934229046	34-91-26	TR 1 IN W 289.81' OF S 161.74' & W 79.3' OF N 347.3' OF LOT 1 NE NE	0.20	0.32	14.44	0.014%
SCHOO, LEO T. & CONNIE J., JTRS.	0934230001	34-91-26	LOT 22 PRKVW	0.28	0.42	19.20	0.019%
DAS, REBECCA K.	0934230002	34-91-26	LOT 23 PRKVW	0.22	0.33	15.07	0.015%
SISSON, KENNETH W. & SISSON, DARCY J., JTRS	0934230003	34-91-26	LOT 24 PRKVW	0.22	0.33	14.92	0.015%
HANSON, MICHAEL LYNN & VALERIE LYNN, JTRS	0934230004	34-91-26	LOT 25 PRKVW	0.22	0.33	14.82	0.015%
HUNT, ANDREW & HUNT, AMY, JTRS	0934230005	34-91-26	LOT 26 PRKVW	0.22	0.33	14.73	0.015%
WILLIAMS, GARY W. & KATHY J., JTRS	0934230006	34-91-26	LOT 27 PRKVW	0.28	0.41	18.54	0.019%
MRLA, BRADLEY J. & MRLA, ASHLEY, JTRS	0934230007	34-91-26	LOT 33 PRKVW	0.28	0.41	18.72	0.019%
HAUGLAND, JANIS	0934230008	34-91-26	LOT 32 PRKVW	0.22	0.33	14.83	0.015%
JONES, STEVEN RAY	0934230009	34-91-26	LOT 31 PRKVW	0.22	0.33	14.93	0.015%
WILLARD WEST, KELLI	0934230010	34-91-26	LOT 30 PRKVW	0.22	0.33	14.95	0.015%
ROBINSON, DARREN K. & ROBINSON, REINA M., JTRS	0934230011	34-91-26	LOT 29 PRKVW	0.22	0.33	14.89	0.015%
AINGER FAMILY TRUST, LESLIE & AINGER FAMILY TRUST, BARBARA CITY OF EAGLE GROVE	0934230012	34-91-26	LOT 28 PRKVW	0.28	0.42	18.82	0.019%
KRAMERSMEIER, DELMAR E. & JANET S.	0934232002	34-91-26	LOT 34 PARKVEIW PARK 34-91-26 E 30' OF W 150' OF N100' OF LOT 8 NE NE 34-91-26	1.00	1.44	65.00	0.065%
KRAMERSMEIER, DELMAR E. & JANET S., JTRS	0934232003	34-91-26	LOT 20 PRKVW	0.07	0.10	4.55	0.005%
HALVERSON, TERRY L. & ERIN C., JTRS	0934232004	34-91-26	LOT 19 PRKVW	0.24	0.34	15.59	0.016%
TERRY'S GOLF COURSE CONTRACTING, INC.	0934232005	34-91-26	LOT 18 PRKVW	0.24	0.34	15.57	0.016%
DEYOUNG, ARTHUR D. & RAMONA R., JTRS	0934232006	34-91-26	LOT 17 PRKVW	0.24	0.34	15.55	0.016%
BACHEL, DIANA L.	0934232007	34-91-26	LOT 16 PRKVW	0.24	0.34	15.55	0.016%
ANDERSON, CHRISTINA R.	0934232008	34-91-26	LOT 15 PRKVW	0.24	0.34	15.49	0.015%
FEDERAL HOME LOAN MORTGAGE CORPORATION	0934232009	34-91-26	LOT 14 PRKVW	0.24	0.34	15.54	0.016%
WARLAND, ROBERT W. & WARLAND, BEVERLY B., JTRS	0934232011	34-91-26	LOT 21 P.V. & N 100' OF W 120' OF LOT 8 NE NE 34-91-26 TH PT OF PARCEL D INLOT 8 NE NE 34-91-26	0.29	0.37	16.90	0.017%
TORKELSON PROPERTIES, LLC	0934232012	34-91-26	PARCEL C IN LOT 8 NE NE 34-91-26	0.37	0.53	24.04	0.024%
WARLAND, ROBERT W. & WARLAND, BEVERLY B., JTRS	0934232013	34-91-26	LOT 8 EXC N 100' OF W 150' & EXC N 86' OF E 782.5' & EXC PARCEL C & TH PT OF PARCEL D NE NE 34-91-26	0.74	1.46	65.99	0.066%
TERRY'S GOLF COURSE CONTRACTING, INC.	0934232014	34-91-26	W 1/2 OF LOT 1 EXC S14' SW NE 34-91-26 E 1/2 OF LOT 1 EXC N57' & EXC S 14' SW NE 34-91-26	0.01	0.01	0.64	0.001%
AMONSON, KYLE & AMONSON, GWENDOLYN, JTRS	0934251002	34-91-26	OUTLOT 10 EXC N 14' OF S 80' & EXC N 57' WRI S	2.90	3.70	167.21	0.167%
ADVANCED DRAINAGE SYSTEMS. INC.	0934252001	34-91-26	TR 150' X 181' IN LOT 3 SW NE 34-91-26	4.01	3.98	179.92	0.180%
ADVANCED DRAINAGE SYSTEMS. INC.	0934252002	34-91-26	LOT 3 SW NE EXC TR 150' X 181' 34-91-26	3.00	4.04	182.92	0.183%
AMONSON, KELLY	0934253001	34-91-26	LOT 4 SW NE 34-91-26	5.40	9.70	438.71	0.439%
K & K CONSTRUCTION, LLC	0934253002	34-91-26	W 5 AC OF OUTLOT 11 WRIGHTS SOUTH	0.62	0.94	42.59	0.043%
HARKEMA, DOUGLAS D.	0934253003	34-91-26	PAR L IN OUTLOT 11 34-91-26	4.11	5.13	232.12	0.232%
HARKEMA, DOUGLAS D. & NANCY SCHNELL, JTRS	0934253004	34-91-26		4.77	2.93	132.66	0.133%
HARKEMA, DOUGLAS D. & SCHNELL, NANCY D., JTRS	0934253008	34-91-26		5.15	4.11	185.70	0.186%
				9.79	7.59	343.09	0.343%

DRAINAGE DISTRICT NO. 94

WRIGHT COUNTY, IOWA

2020

MAIN TILE ASSESSMENT SCHEDULE



LANDOWNER(S)	PIN	S-T-R	BENEFITED PARCEL	ACRES	CLASS (%)	ASSESSMENT UNITS	% SCHEDULE
<b>T91N R26W, EAGLE GROVE TOWNSHIP</b>							
GRIMSLEY, MATTHEW A. & GRIMSLEY, MALINDA, JTRS	0934253010	34-91-26	OUTLOT 11 EXC W 5 AC WR-S AND EXC PAR L 34-91-26	2.04	1.93	87.22	0.087%
PETERSON, TOM & DENISE	0934254001	34-91-26	LOT 8 DUNN'S ADDITION	0.47	0.60	27.28	0.027%
PETERSON, TOM & DENISE	0934254002	34-91-26	LOT 16 DUNN'S ADDITION	0.46	0.62	27.82	0.028%
PETERSON, TOM & DENISE	0934254003	34-91-26	LOT 7 DUNN'S ADDITION	0.17	0.22	9.81	0.010%
PETERSON, TOM & DENISE	0934254004	34-91-26	LOT 15 DUNN'S ADDITION	0.16	0.21	9.59	0.010%
PETERSON, TOM & DENISE	0934254005	34-91-26	LOT 6 DUNN'S ADDITION	0.21	0.20	9.26	0.009%
PETERSON, TOM & DENISE	0934254006	34-91-26	LOT 14 DUNN'S ADDITION	0.19	0.25	11.40	0.011%
PETERSON, TOM & DENISE	0934254008	34-91-26	LOT 13 DUNN'S ADDITION	0.19	0.26	11.59	0.012%
PETERSON, THOMAS LEE & DENISE M., JTRS	0934254009	34-91-26	ALL OF LOTS 4 & 5 & LOT 3 EXC S 16' DUNN'S ADDITION	0.55	0.60	27.23	0.027%
PETERSON, TOM & PETERSON, DENISE	0934254010	34-91-26	LOT 12 DUNN'S ADDITION	0.19	0.25	11.14	0.011%
AXTELL, TONY L.	0934254012	34-91-26	LOT 11 DUNN'S ADDITION	0.19	0.24	11.00	0.011%
JET HOMES, LLC	0934254013	34-91-26	LOT 2 & S 16' OF LOT3 DUNN'S ADDITION	0.24	0.27	12.36	0.012%
AXTELL, TONY L.	0934254014	34-91-26	LOT 10 DUNN'S ADDITION	0.19	0.26	11.70	0.012%
AXTELL, TONY L.	0934254015	34-91-26	LOT 1 DUNN'S ADDITION	0.25	0.25	11.20	0.011%
AXTELL, TONY L.	0934254016	34-91-26	LOT 9 DUNN'S ADDITION	0.23	0.33	15.09	0.015%
JET HOMES, LLC, 1/16 INT & PETERSON, TOM & PETERSON, DENISE, 15/16 INT	0934254018	34-91-26	TH PT OF ROAD IN DUNN'S ADD LY N OF S LINE OF LOT 13	0.78	1.00	45.33	0.045%
JET HOMES, LLC, 1/16 INT & PETERSON, TOM & PETERSON, DENISE, 15/16 INT	0934254020	34-91-26	TH PT OF ROAD IN DUNN'S ADD LY ADJ TO & W OF LOT 12	0.06	0.05	2.40	0.002%
JET HOMES, LLC, 1/16 INT & PETERSON, TOM & PETERSON, DENISE, 15/16 INT	0934254021	34-91-26	TH PT OF ROAD IN DUNN'S ADD LY S OF S LINE OF LOT 12	0.18	0.17	7.68	0.008%
TORKELSON CONSTRUCTION, LLC	0934276002	34-91-26	PARCEL E (AKA LOT 9)IN NE NE 34-91-26	0.94	1.39	62.98	0.063%
TERRY'S GOLF COURSE CONTRACTING, INC.	0934276003	34-91-26	LOT 2 IN SE NE 34-91-26	1.15	2.35	106.16	0.106%
SCHWANZ, CHASE A. & SCHWANZ, JILLIAN D., JTRS	0934277002	34-91-26	LOT 3 & 66 X 610.2' LY BETWEEN LOTS 3-4 SE NE 34-91-26	4.78	2.73	123.51	0.124%
GORD, DAVID C. & GORD, LINDA C., JTRS	0934277003	34-91-26	TRACT ON W SIDE OF LOT 4 SE NE 34-91-26 (LAND ONLY)	0.14	0.12	5.62	0.006%
GORD, DAVID C. & GORD, LINDA, JTRS	0934277004	34-91-26	LOT 4 EXC TR ON W SIDE & LOT 5 SE NE 34-91-26 (LAND & BLDGS ONLY)	9.87	5.64	255.26	0.255%
TERRY'S GOLF COURSE CONTRACTING, INC.	0934277005	34-91-26	LOT 1 EXC TH PT OF PARCEL D SE NE 34-91-26	9.12	9.06	409.69	0.410%
TORKELSON PROPERTIES, LLC	0934277006	34-91-26	TH PT OF PARCEL D INLOT 1 SE NE 34-91-26	0.02	0.04	1.85	0.002%
FMO REAL ESTATE, LLC	0934327001	34-91-26	TH PT OF NE SW LY W OF HWY & E OF DD #15 34-91-26	0.00	0.00	0.01	0.000%
BOWER MASONIC LODGE #464-AF & AM	0934328001	34-91-26	TH PT OF NE SW LY E OF HIGHWAY 34-91-26	2.25	2.42	109.33	0.109%
FIFTH GENERATION INVESTMENTS, L.L.C.	0934329001	34-91-26	PARCEL 2 IN NE SW 34-91-26	0.00	0.00	0.01	0.000%
EMERSON VETERINARY CLINIC & HOSPITAL, P. C.	0934330001	34-91-26	PT OF ABANDONED RR ROW E OF HWY #17 NE SW 34-91-26	0.03	0.02	0.70	0.001%
HARKEMA, DOUGLAS D. & SCHNELL, NANCY D., JTRS	0934400001	34-91-26	W 571' OF N 565.15' EXC W 176.85' OF S 233.5 OF NW SE 34-91-26	3.00	2.27	102.90	0.103%
EMERSON VETERINARY CLINIC & HOSPITAL, P. C.	0934400002	34-91-26	N 200' OF S 530' OF W 150' OF NW SE 34-91-26	0.50	0.32	14.38	0.014%
DEISCHER REVOCABLE TRUST, DENNIS R., T <sup>JD</sup> INT & SANDVIG, PENNY LEE, T <sup>JD</sup> INT & DEISCHER, B. RUTH, LE, T <sup>JD</sup> INT REM: DEISCHER REVOCABLE TRUST, DENNIS R., T <sup>JD</sup> INT & SANDVIG, PENNY L., T <sup>JD</sup> INT	0934400004	34-91-26	NW SE EXC S 20 RDS OF W 40 RDS & EXC 2 TRACTS 34-91-26	9.00	4.73	214.08	0.214%

# DRAINAGE DISTRICT NO. 94

WRIGHT COUNTY, IOWA

2020

## MAIN TILE ASSESSMENT SCHEDULE



LANDOWNER(S)	PIN	S-T-R	BENEFITED PARCEL	ACRES	CLASS (%)	ASSESSMENT UNITS	% SCHEDULE
<b>T91N R26W, EAGLE GROVE TOWNSHIP</b>							
DEISCHER REVOCABLE TRUST, DENNIS R., INT & SANDVIG, PENNY LEE, INT & DEISCHER, B. RUTH, LE, INT REM: DEISCHER REVOCABLE TRUST, DENNIS R., INT & SANDVIG, PENNY L., INT	0934400005	34-91-26	TH PT OF NE SE LY W OF RR	8.00	4.76	215.17	0.215%
TOKHEIM, WILLARD, IN TRUST, ETAL % WILMA CARGIN	0934400006	34-91-26	TH PT OF NE SE LYG E OF R.R.	6.00	3.83	173.35	0.173%
CHICAGO & NORTHWESTERN RAILROAD COMPANY % UNION PACIFIC RAILROA	0934501001	34-91-26	BAL RR THRU NW 1/4	1.35	1.78	80.37	0.080%
CHICAGO & NORTHWESTERN RAILROAD COMPANY % UNION PACIFIC RAILROA	0934501002	34-91-26	BAL RR THRU NE 1/4	9.89	11.08	501.08	0.501%
CHICAGO & NORTHWESTERN RAILROAD COMPANY % UNION PACIFIC RAILROA	0934501003	34-91-26	BAL RR THRU SE 1/4	3.29	2.99	135.12	0.135%
ROTARY CLUB OF EAGLE GROVE HOME, INC.	0935100001	35-91-26	OUTLOT B ROTARY ADDITION PHASE 1	32.80	21.34	965.47	0.965%
CARGIN REVOCABLE TRUST, WILMA J.	0935100003	35-91-26	NE NW 35-91-26	38.52	33.54	1516.88	1.517%
CARGIN REVOCABLE TRUST, WILMA J.	0935100004	35-91-26	SW NW 35-91-26	39.81	22.84	1033.07	1.033%
CARGIN REVOCABLE TRUST, WILMA J.	0935100005	35-91-26	SE NW 35-91-26	39.82	21.35	965.64	0.966%
ROTARY CLUB OF EAGLE GROVE HOME, INC.	0935100006	35-91-26	LOT 1 ROTARY ADDITION	0.25	0.39	17.84	0.018%
ROTARY CLUB OF EAGLE GROVE HOME, INC.	0935100007	35-91-26	LOT 2 ROTARY ADDITION	0.20	0.33	15.05	0.015%
ROTARY CLUB OF EAGLE GROVE HOME, INC.	0935100008	35-91-26	LOT 3 ROTARY ADDITION	0.20	0.33	14.99	0.015%
ROTARY CLUB OF EAGLE GROVE HOME, INC.	0935100009	35-91-26	LOT 4 ROTARY ADDITION	0.20	0.33	14.96	0.015%
ROTARY CLUB OF EAGLE GROVE HOME, INC.	0935100010	35-91-26	LOT 5 ROTARY ADDITION	0.24	0.40	18.08	0.018%
ROTARY CLUB OF EAGLE GROVE HOME, INC.	0935100011	35-91-26	LOT 6 ROTARY ADDITION	0.21	0.35	15.82	0.016%
ROTARY CLUB OF EAGLE GROVE HOME, INC.	0935100012	35-91-26	LOT 7 ROTARY ADDITION	0.22	0.36	16.36	0.016%
ROTARY CLUB OF EAGLE GROVE HOME, INC.	0935100013	35-91-26	LOT 8 ROTARY ADDITION	0.30	0.49	22.35	0.022%
ROTARY CLUB OF EAGLE GROVE HOME, INC.	0935100014	35-91-26	LOT 9 ROTARY ADDITION	0.48	0.77	34.91	0.035%
ROTARY CLUB OF EAGLE GROVE HOME, INC.	0935100015	35-91-26	LOT 10 ROTARY ADDITION	0.30	0.50	22.52	0.023%
ROTARY CLUB OF EAGLE GROVE HOME, INC.	0935100016	35-91-26	LOT 11 ROTARY ADDITION	0.20	0.34	15.18	0.015%
ROTARY CLUB OF EAGLE GROVE HOME, INC.	0935100017	35-91-26	LOT 12 ROTARY ADDITION	0.25	0.42	19.06	0.019%
ROTARY CLUB OF EAGLE GROVE HOME, INC.	0935100018	35-91-26	OUTLOT A ROTARY ADDITION	2.64	2.26	102.35	0.102%
SPANGLER, ABE	0935200001	35-91-26	NW NE 35-91-26	38.50	35.73	1616.09	1.616%
SPANGLER, ABE	0935200002	35-91-26	NE NE 35-91-26	37.00	25.83	1168.21	1.168%
SPANGLER, ABE	0935200003	35-91-26	SW NE 35-91-26	40.00	33.02	1493.45	1.493%
SPANGLER, ABE	0935200004	35-91-26	SE NE 35-91-26	39.00	29.65	1340.94	1.341%
TOKHEIM, WILLARD, IN TRUST, ETAL % WILMA CARGIN	0935300001	35-91-26	TH PT OF NW SW LYG E OF R. R.	39.00	23.53	1064.20	1.064%
TOKHEIM, WILLARD, IN TRUST, ETAL % WILMA CARGIN	0935300002	35-91-26	NE SW 35-91-26	34.00	14.90	673.94	0.674%
SPANGLER, JACK & ANGELINE E., JTRS	0935400001	35-91-26	NW SE 35-91-26	26.00	13.15	594.92	0.595%
SPANGLER, JACK & ANGELINE E., JTRS	0935400002	35-91-26	NE SE 35-91-26	35.00	20.57	930.47	0.930%
FISHER REVOCABLE TRUST, GARY & FISHER REVOCABLE TRUST, SHARON A.	0936100001	36-91-26	NW NW 36-91-26	12.00	5.66	256.05	0.256%
FISHER REVOCABLE TRUST, GARY & SHARON	0936100002	36-91-26	SW NW 36-91-26	16.00	9.32	421.46	0.421%
KEPPERS, LAVONNE, 1/2 & KEPPERS RESIDUARY TRUST, HAROLD, 1/2	0936300014	36-91-26	NW SW EXC PARCEL B & EXC E 1/2 OF E 1/2	4.00	1.45	65.45	0.065%
KEPPERS RESIDUARY TRUST, HAROLD, 1/2			36-91-26				

DRAINAGE DISTRICT NO. 94

WRIGHT COUNTY, IOWA

2020

MAIN TILE ASSESSMENT SCHEDULE



LANDOWNER(S)	PIN	S-T-R	BENEFITED PARCEL	ACRES	CLASS (%)	ASSESSMENT UNITS	% SCHEDULE
<b>T91N R26W, EAGLE GROVE TOWNSHIP</b>							
CITY OF EAGLE GROVE ROADS	101	RIGHT-OF-WAY	City	112.18	253.86	11482.74	11.483%
WRIGHT COUNTY SECONDARY ROADS	201	RIGHT-OF-WAY	County	26.17	49.92	2257.85	2.258%
IOWA DEPARTMENT OF TRANSPORTATION	301	RIGHT-OF-WAY	State	3.74	12.40	560.86	0.561%
<b>TOTAL ASSESSMENT SCHEDULE AMOUNT =</b>						<b>100,000.00</b>	

APPENDIX C:

DD94 –LATERAL 1 TILE  
ASSESSMENT PLAT & SCHEDULE



# DD 94 Lateral 1 Tile Assessment Plat

Wright County,  
Iowa  
Thursday, May 28, 2020

Label Key:  
Net Benefitted Acres  
% Classification/Acre

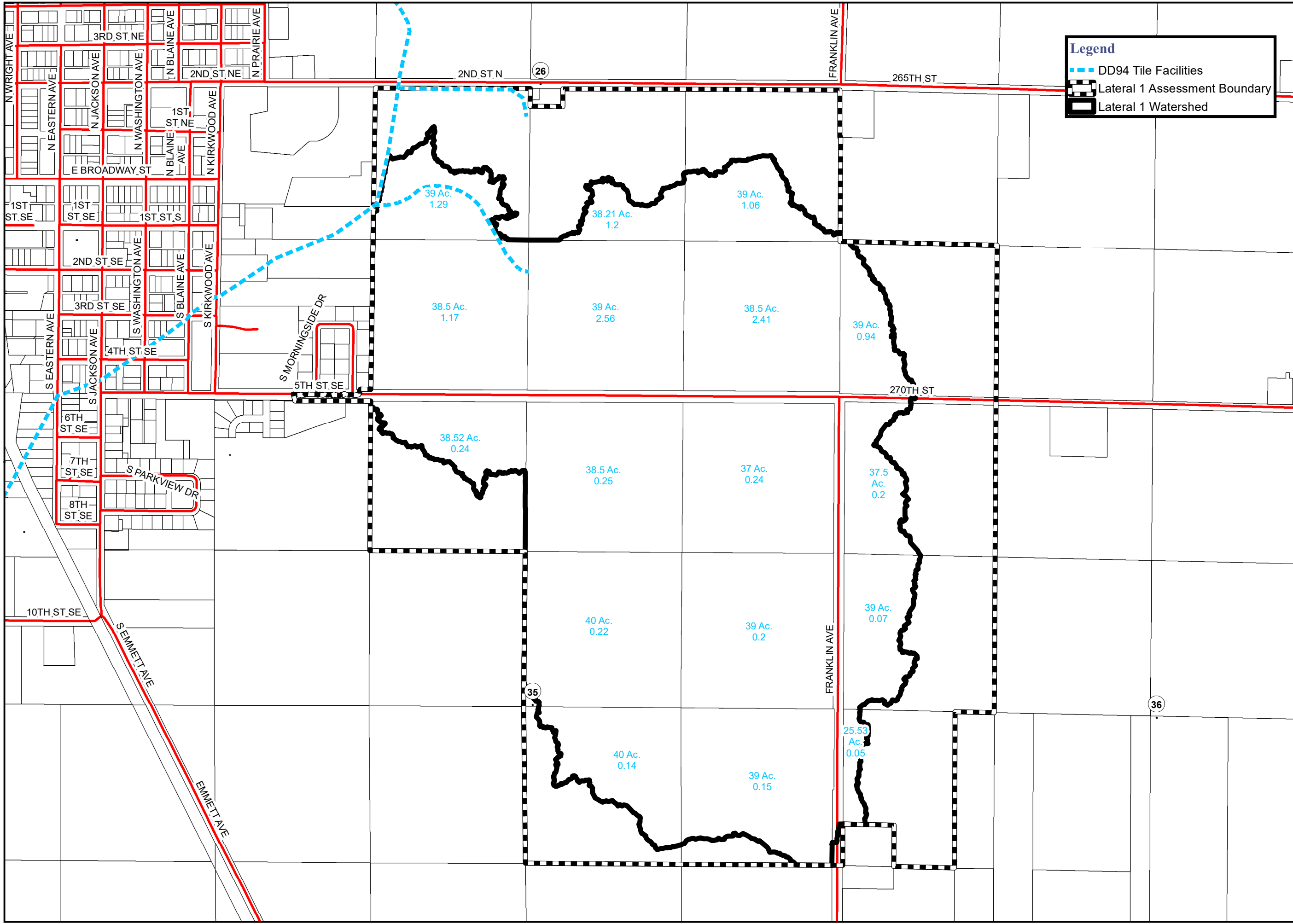
PN: 19-23076  
Source:



0 187.5 375 750 Feet  
1 inch = 750 feet

### Legend

- DD94 Tile Facilities
- Lateral 1 Assessment Boundary
- Lateral 1 Watershed



# DRAINAGE DISTRICT NO. 94

WRIGHT COUNTY, IOWA

2020



## LATERAL 1 TILE ASSESSMENT SCHEDULE

LANDOWNER(S)	PIN	S-T-R	BENEFITED PARCEL	ACRES	CLASS (%)	ASSESSMENT UNITS	% SCHEDULE
<b>T91N R26W, EAGLE GROVE TOWNSHIP</b>							
CUTALO FAMILY LIVING TRUST	0925300005	25-91-26	SW SW 25-91-26	9.00	8.49	238.68	2.387%
SPANGLER LIVING TRUST, RONALD E.	0926326001	26-91-26	NE SW 26-91-26	16.00	20.61	579.49	5.795%
SPANGLER LIVING TRUST, RONALD E.	0926376001	26-91-26	SE SW 26-91-26	38.50	45.23	1271.67	12.717%
SPANGLER, MELVIN D.	0926400003	26-91-26	NE SE EXC E 8' OF N 440' 26-91-26	15.00	15.83	445.12	4.451%
SPANGLER LIVING TRUST, RONALD E.	0926400004	26-91-26	SW SE 26-91-26	39.00	100.00	2811.47	28.115%
SPANGLER, MELVIN D.	0926400005	26-91-26	SE SE 26-91-26	38.50	92.84	2610.29	26.103%
SPANGLER LIVING TRUST, RONALD E.	0926400006	26-91-26	NW SE EXC N 190' OF W 275' 26-91-26	8.00	9.57	269.00	2.690%
CARGIN REVOCABLE TRUST, WILMA J.	0935100003	35-91-26	NE NW 35-91-26	15.00	3.57	100.36	1.004%
SPANGLER, ABE	0935200001	35-91-26	NW NE 35-91-26	38.50	9.53	267.89	2.679%
SPANGLER, ABE	0935200002	35-91-26	NE NE 35-91-26	37.00	8.83	248.29	2.483%
SPANGLER, ABE	0935200003	35-91-26	SW NE 35-91-26	40.00	8.64	242.84	2.428%
SPANGLER, ABE	0935200004	35-91-26	SE NE 35-91-26	39.00	7.63	214.47	2.145%
SPANGLER, JACK & ANGELINE E., JTRS	0935400001	35-91-26	NW SE 35-91-26	22.00	3.17	89.06	0.891%
SPANGLER, JACK & ANGELINE E., JTRS	0935400002	35-91-26	NE SE 35-91-26	35.00	5.28	148.50	1.485%
FISHER REVOCABLE TRUST, GARY & FISHER REVOCABLE TRUST, SHARON A.	0936100001	36-91-26	NW NW 36-91-26	12.00	2.40	67.36	0.674%
FISHER REVOCABLE TRUST, GARY & SHARON	0936100002	36-91-26	SW NW 36-91-26	16.00	1.19	33.58	0.336%
KEPPERS, LAVONNE, 1/2 & KEPPERS RESIDUARY TRUST, HAROLD, 1/2	0936300014	36-91-26	NW SW EXC PARCEL B & EXC E 1/2 OF E 1/2 36-91-26	4.00	0.19	5.21	0.052%
CITY OF EAGLE GROVE ROADS	101	RIGHT-OF-WAY	City	3.93	1.64	46.17	0.462%
WRIGHT COUNTY SECONDARY ROADS	201	RIGHT-OF-WAY	County	14.45	11.05	310.55	3.106%
<b>TOTAL ASSESSMENT SCHEDULE AMOUNT =</b>						<b>10,000.00</b>	

APPENDIX D:

DD94 –LATERAL 2 TILE  
ASSESSMENT PLAT & SCHEDULE



# DD 94 Lateral 2 Tile Assessment Plat

Wright County,  
Iowa  
Thursday, May 28, 2020

Label Key:  
Net Benefited Acres  
% Classification/Acre

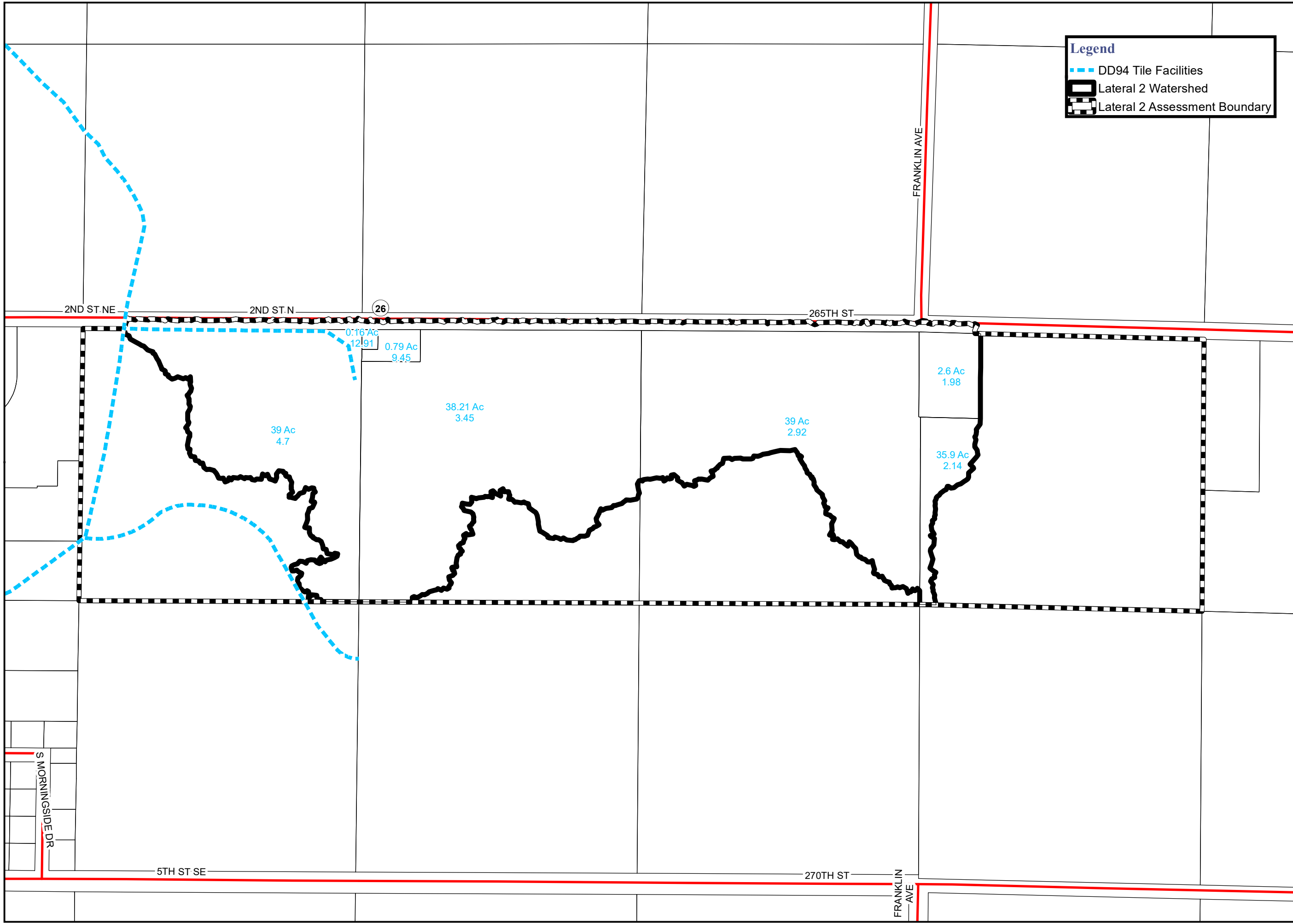
PN: 19-23076  
Source:



0 105 210 420 Feet  
1 inch = 417 feet

**Legend**

- DD94 Tile Facilities
- Lateral 2 Watershed
- Lateral 2 Assessment Boundary



# DRAINAGE DISTRICT NO. 94

WRIGHT COUNTY, IOWA

2020



## LATERAL 2 TILE ASSESSMENT SCHEDULE

LANDOWNER(S)	PIN	S-T-R	BENEFITED PARCEL	ACRES	CLASS (%)	ASSESSMENT UNITS	% SCHEDULE
<b>T91N R26W, EAGLE GROVE TOWNSHIP</b>							
TRAUSCH, KENNETH F., LE & TRAUSCH, DARLENE M., LE REM: HINZ, JULIE, 1/3 INT & TWEETEN, JOLENE, 1/3 INT & TRAUSCH, JEROLD, 1/3 INT	0925300001	25-91-26	E 8' OF N 440' OF NESE OF SEC 26 & W 282OF N 440' OF NW SW 25-91-26	2.60	5.15	167.37	1.674%
CUTALO FAMILY LIVING TRUST	0925300002	25-91-26	NW SW EXC W 282' OF N 440' 25-91-26	3.00	6.42	208.81	2.088%
SPANGLER LIVING TRUST, RONALD E.	0926326001	26-91-26	NE SW 26-91-26	17.00	79.92	2597.58	25.976%
NORTHERN NATURAL GAS COMPANY	0926400001	26-92-26	W 75' OF N 93' NW SE 26-91-26	0.16	2.07	67.13	0.671%
SPANGLER, MELVIN D.	0926400003	26-91-26	NE SE EXC E 8' OF N 440' 26-91-26	24.00	70.04	2276.51	22.765%
SPANGLER LIVING TRUST, RONALD E.	0926400006	26-91-26	NW SE EXC N 190' OF W 275' 26-91-26	29.00	100.00	3250.08	32.501%
SPANGLER, FRED A. & SPANGLER, SHIRLEY A., JTRS	0926400007	26-91-26	W 275' OF N 190' OF NW SE EXC N 93' OF W 75' 26-91-26	0.79	7.47	242.75	2.428%
CITY OF EAGLE GROVE ROADS	101	RIGHT-OF- WAY	City	1.09	12.70	412.82	4.128%
WRIGHT COUNTY SECONDARY ROADS	201	RIGHT-OF- WAY	County	2.85	23.91	776.95	7.770%
<b>TOTAL ASSESSMENT SCHEDULE AMOUNT =</b>						<b>10,000.00</b>	